



FORMING AND SHORING EQUIPMENT
FOR CONCRETE CONSTRUCTION

HEF EAST & WEST ABUTMENT WALL FORMWORK

CONTRACTOR:

**HERBACK GENERAL
ENGINEERING, LLC**

PROJECT:

**WEYLAND BRIDGE
RE-INSTALLATION**

RELEASE DATE:

OCTOBER 12, 2020

EFCO PROJECT NUMBER:

P300650

A

EFCO AGREEMENT NUMBER:

**2060112-01 &
2060113-01**

A

NEAREST EFCO OFFICE:

EFCO FRESNO
3340 E. CHURCH AVENUE
FRESNO, CA 93725-1339
PHONE: (559) 266-9474
FAX: (559) 266-9476

EFCO HOME OFFICE:

EFCO CORP.
1800 N.E. BROADWAY
DES MOINES, IOWA 50313-2644
PHONE: (515) 266-1141
FAX: (515) 313-4422

INDEX			
SHEET NUMBER	SHEET NAME	REVISION	NEW SHEET
COVER	PROJECT DESCRIPTION AND INDEX	A	
001	NOTES AND SAFETY	A	
002	SYMBOLS & ABBREVIATIONS	-	
ERECTION DRAWINGS			
101	KEY PLAN	-	
102	PLAN VIEW - WEST ABUTMENT POUR #1	-	
103	PLAN VIEW - WEST ABUTMENT POUR #2	A	
104	PLAN VIEW - EAST ABUTMENT POUR #3	-	
105	SECTION VIEWS	A	
ASSEMBLY DETAILS			
500	HAND-E-FORM DETAILS	A	
501	HAND-E-FORM DETAILS	A	
DRAWING REVISION HISTORY			
REVISION	REVISION DESCRIPTION	DATE	
A	DESIGN LOAD NOTES, DETAILS, & DIMENSIONS HAVE BEEN UPDATED.	12OCT20	

REVISION "A"
DATE 12OCT20



SCAFFOLD SAFETY

- IT IS THE USER'S RESPONSIBILITY TO ENSURE THAT ALL SCAFFOLDING AND ACCESS TO THE FORMS COMPLIES WITH ALL APPLICABLE LAWS, REGULATIONS, AND CODES, INCLUDING THE OCCUPATIONAL SAFETY AND HEALTH ACT (OSHA).
- SCAFFOLD LOCATIONS SHOWN ON EFCO DRAWINGS ARE TYPICAL AND ONLY FOR ILLUSTRATION. ACTUAL LOCATIONS WILL VARY WITH JOB CONDITIONS AND ARE THE RESPONSIBILITY OF THE USER.
- IF, DUE TO JOB OR ANY OTHER CONDITIONS, EFCO SCAFFOLD BRACKETS AND POSTS CANNOT BE USED AS ILLUSTRATED, IT IS THE RESPONSIBILITY OF THE USER TO PROVIDE ADEQUATE ALTERNATIVE SCAFFOLDING AND ACCESS.
- EFCO SCAFFOLD BRACKETS ARE DESIGNED FOR THE SUPPORT OF PERSONNEL ONLY, NOT FOR THE STORAGE OF MATERIALS SUCH AS REINFORCING ROD, ETC., OR HEAVY EQUIPMENT.
- EFCO SCAFFOLD BRACKETS COMPLY WITH ALL APPLICABLE LAWS, REGULATIONS, AND CODES, INCLUDING THE OCCUPATIONAL SAFETY AND HEALTH ACT (OSHA). IT IS THE USER'S RESPONSIBILITY TO ENSURE THAT ALL PLANKING AND RAILS ARE ADEQUATE FOR THE SPACING USED AND IN GOOD CONDITION. ALL PLANKING AND RAILS ARE PROVIDED BY USER.
- USER MUST INSPECT ALL SCAFFOLDING FOR DAMAGE. DAMAGED SCAFFOLDING MUST BE DISCARDED AND NOT USED.
- USERS SHOULD NOT CLIMB FORMS WITHOUT FALL ARREST SYSTEMS CONFORMING TO OSHA SUB PART M.
- IF POSITIONING SYSTEMS ARE USED, EFCO RECOMMENDS CAPITAL SAFETY SAFELOK CARABINER No. 200114 OR EQUAL, IN COMBINATION WITH REQUIRED FALL ARREST SYSTEMS.

CONTRACTOR'S RESPONSIBILITIES

- THE CUSTOMER SHALL BEAR THE SOLE RESPONSIBILITY FOR ENSURING THAT ASSEMBLY, USE AND MAINTENANCE OF THE EQUIPMENT AND MATERIALS SHOWN ON THESE DRAWINGS CONFORMS TO ALL LAWS, REGULATIONS, ORDINANCES AND LOCAL CODES, AND FOR CHECKING THE ACCURACY AND SUFFICIENCY OF FIELD DETAILS AND DIMENSIONS.
- ALL DRAWINGS MUST BE CHECKED BY THE CUSTOMER FOR CORRECTNESS IN RELATION TO PROJECT PLANS SPECIFICATIONS PARTICULAR REFERENCE MUST BE MADE FOR REVISIONS ISSUED BY THE ARCHITECT OR ENGINEER.
- THE INDICATED CAPACITY OF DEVICES SECURED BY DRILLING OR EMBEDMENT IN CONCRETE IS ENTIRELY DEPENDENT UPON THE QUALITY AND HOLDING CAPACITY OF THE SURROUNDING CONCRETE. THE CUSTOMER SHALL ENSURE THAT THE CONCRETE HAS SUFFICIENT STRENGTH TO HOLD THE LOADS APPLIED.
- IT IS THE CUSTOMER'S RESPONSIBILITY TO COMMUNICATE TO ALL PERSONNEL INVOLVED IN THE USE OF THE EQUIPMENT ALL INFORMATION CONTAINED IN THESE NOTES AND OTHER NOTES ON ALL DRAWINGS SUPPLIED BY EFCO AND TO ENSURE THAT THEY UNDERSTAND THEM AND USE THE EQUIPMENT ACCORDINGLY.
- ANY ALTERATION OR REPAIR OF EFCO EQUIPMENT MUST BE AUTHORIZED IN WRITING BY EFCO AND MUST BE CARRIED OUT BY QUALIFIED PERSONNEL. ANY MODIFICATIONS OF EQUIPMENT OR USE OF THAT EQUIPMENT OTHER THAN AS SHOWN WITHOUT APPROVAL IN WRITING BY EFCO WILL VOID ALL FORM WARRANTIES. THE EFCO PLATE GIRDER® SYSTEM IS A REGISTERED TRADEMARK. THIS PRODUCT WAS DESIGNED FOR USE WITH PRODUCTS MANUFACTURED BY EFCO AND IT IS RECOMMENDED THAT IT NOT BE COMMINGLED WITH PRODUCTS OF OTHER MANUFACTURER'S FORMING SYSTEMS.

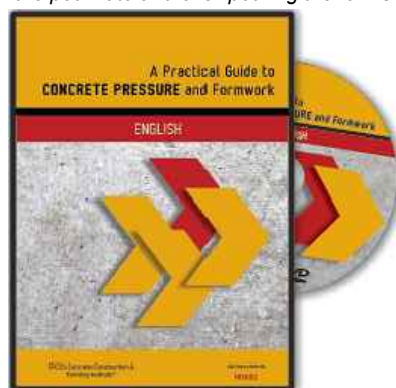
EFCO FORMWORK

- EFCO FORM PANELS HAVE BEEN RUST PROTECTED WITH "EF-GARD®" AT THE PLANT. TO SECURE MAXIMUM BENEFIT, THE FORMS MUST BE OILED WITH "EF-COAT®" FORM RELEASE AGENT PRIOR TO THE FIRST USE AND BEFORE EACH REUSE.
- IT IS THE FORM USER'S RESPONSIBILITY TO MONITOR AND MANAGE CONCRETE TEMPERATURE, CONCRETE CHEMISTRY, AND CONCRETE PLACEMENT RATE TO PREVENT CONCRETE PRESSURE FROM EXCEEDING THE RATED CAPACITY OF THE FORM.
- DO NOT WELD TIES UNLESS NOTED OTHERWISE.
- ALL WOOD, BULKHEADS, AUTHORIZED FIELD DRILLING AND WELDING, GUYING, BRACING, AND ALIGNMENT BY CONTRACTOR.
- SHIM ALL FORM JOINTS AS REQUIRED FOR PROPER FORM ALIGNMENT.
- HEAVY DUTY PIPE BRACES ARE LOCATED ADJACENT TO EACH VERTICAL FORMWORK JOINT UNLESS NOTED OTHERWISE.
- ANCHOR CAPACITY IS BASED ON A MINIMUM CONCRETE STRENGTH, $f_c = 3000$ psi UNLESS NOTED OTHERWISE. IT IS THE CONTRACTOR'S RESPONSIBILITY TO DETERMINE THE CONCRETE STRENGTH BEFORE LOADING.
- USE $\varnothing 3/4"$ x 2" QUICK BOLTS WITH NUTS AT ALL CONNECTIONS UNLESS NOTED OTHERWISE.

HAND-E-FORM® DRAWING

- THE RATED CAPACITY IS 750 lb/ft² EQUATING TO 5'-0" MAX LIQUID HEAD OF CONCRETE.
- ATTACH SCAFFOLD BRACKET TO FORMS WITH SPREADER TIE PINS.
- WHEN ATTACHING BLOCKOUTS TO FORMS, FIELD DRILL $\varnothing 3/16"$ HOLE AND NAIL BLOCKOUT TO FORM.
- WALER ALL UNTIED JOINTS.

"A Practical Guide to Concrete Pressure and Formwork" is now available.
This video will help your team to reduce the risk of formwork failure due to exceeding the pour rate and over-pouring the forms.



DESIGN LOADS

1. MAXIMUM CONCRETE FORM PRESSURE RATING

- WALL FORM = 750 lb/ft^2 EQUATING TO 5'-0" MAX LIQUID HEAD OF CONCRETE

2. DEAD LOAD

- CONCRETE = 150 lb/ft^3

3. LIVE LOAD

- LIVE LOAD = 50 lb/ft^2



4. CONTRACTOR'S RESPONSIBILITY

- IT IS THE CONTRACTOR'S RESPONSIBILITY TO ENSURE THAT DESIGN LOADING IS NOT EXCEEDED IN ANY CASE.
- IT IS THE CONTRACTOR'S RESPONSIBILITY TO VERIFY THAT THE PERMANENT CONCRETE STRUCTURE CAN SAFELY WITHSTAND THE TEMPORARY FORMWORK AND SHORING DESIGN LOAD IMPOSED DURING CONSTRUCTION.
- IT IS THE CONTRACTOR'S RESPONSIBILITY TO ENSURE THAT ALL FORMWORK AND/OR SHORING IS LATERALLY SECURED IN ALL DIRECTIONS TO EXISTING WALLS, BEAMS, OR COLUMNS. EXTERNAL BRACING IS REQUIRED AT UNRESTRAINED AREAS AND IN NO CASE SHOULD THE LATERAL RESTRAINT BE LESS THAN THE DESIGN LATERAL LOADS NOTED ABOVE.

DRAWING NOTES:



**FORMING AND SHORING EQUIPMENT
FOR CONCRETE CONSTRUCTION**

HOME OFFICE DES MOINES, IOWA, U.S.A.
DISTRICT OFFICES WORLDWIDE

THIS DRAWING IS THE PROPERTY OF EFCO AND IS LOANED TO THE RECIPIENT IN CONFIDENCE. SEE NOTES AND SAFETY PAGE FOR CONTRACTOR'S RESPONSIBILITIES.

A	UPDATE DESIGN LOAD NOTE	12OCT20	PJT
NO.	REVISION	DATE	BY

OCTOBER 12, 2020

RELEASED FOR: **CONSTRUCTION**

DWG TITLE: **NOTES AND SAFETY**

PROJECT: **WEYLAND BRIDGE RE-INSTALLATION**

PROJECT LOCATION: **BIG SUR, CA**

CONTRACTOR: **HERBACK GENERAL ENGINEERING, LLC**

DETAILED BY	DATE DRAWN	ISSUING OFFICE
DAS	07FEB18	FRESNO
CHECKED BY	DATE CHECKED	EFCO PROJECT NUMBER
ZSP	07FEB18	P300650
AGREEMENT NO.		REVISION

VARIES **001**

EFCO SYMBOLS AND ABBREVIATIONS

@ - AT
 ADJ. - ADJUSTABLE
 ATS - ADJUSTABLE TOP SPREADER
 AS - ALIGNER SPLICE
 ASS'Y - ASSEMBLY

BT - BOLT THRU
 BYL/R - BOTTOM YOKE - LEFT/RIGHT

"C" - CHAMFER
 CBC - COMBINATION BIAS CORNER
 CR - CORNER "REGULAR"
 CH - CORNER "HEAVY"
 CL - CENTER LINE
 CWS - CANTILEVERED WALL SYSTEM
 O.C. - ON CENTER

Ø - DIAMETER
 S/DBT - SINGLE/DOUBLE BOLT TUBE
 ELEV. - ELEVATION

FSH - FLYING SLAB HEADER
 FSR - FLYING SLAB RUNNER
 FC - FRICTION COLLAR
 FS - FAR SIDE

GS - GRADE STRIP

HDR - HEADER
 HDTP - HEAVY DUTY TOLERANCE PLATE
 HA - HORIZONTAL ALIGNER
 HDIA - HEAVY DUTY INSERT ANGLE
 HDMTB - HEAVY DUTY MOVEABLE TIE BEARING
 HD - HEAVY DUTY
 HDPB - HEAVY DUTY PIPE BRACE

IR - INNER ROD
 IS - INSIDE

LA - LAP ANGLE
 LB - LIFTING BEAM
 LE - LIFTING EYE
 LQMTB - LIQUID HEAD MOVEABLE TIE BEARING

MAX - MAXIMUM
 MIN - MINIMUM

NA - NOT APPLICABLE
 NS - NEAR SIDE

OAC - OUTSIDE ANGLE CORNER
 O.C. - ON CENTER
 OS - OUTSIDE
 OH - OPPOSITE HAND

PY - PILASTER YOKE
 PFC - PILE FRICTION COLLAR
 PBS - PIPE BRACE SHOE
 PG - PLATE GIRDER
 PSF - PER SQUARE FOOT

RC - ROUND COLUMN FORM
 "R" - RIB LENGTH

SS - SUPER STUD
 SJ - SCREW/ SWIVEL JACK
 SB - SUPPORT BRACKET
 SWL - SAFE WORKING LOAD

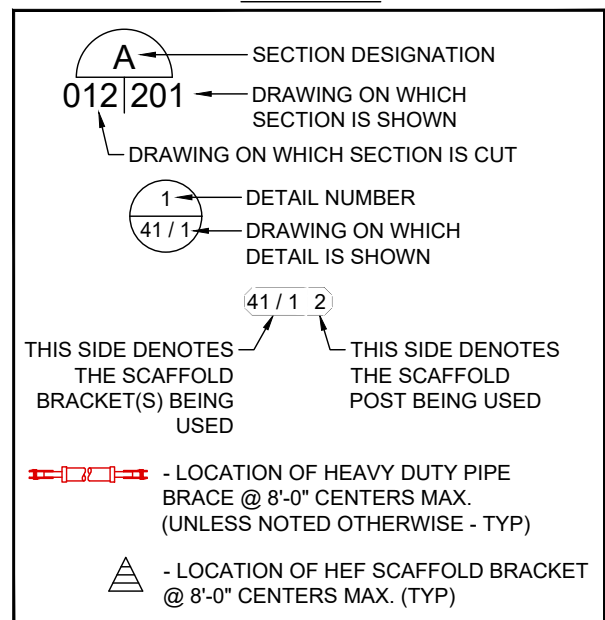
TT - TAPER TIE
 TB - THRU BOLT
 TTW - TAPER TIE WASHER
 TP - TOLERANCE PLATE
 TY - TOP YOKE
 TYE - TOP YOKE ELEVATOR
 TYP - TYPICAL

UNO - UNLESS NOTED OTHERWISE

VIF - VERIFY IN FIELD

WB - WIND BEAM
 W/ - WITH
 W/O - WITHOUT

LEGEND



DRAWING NOTES:



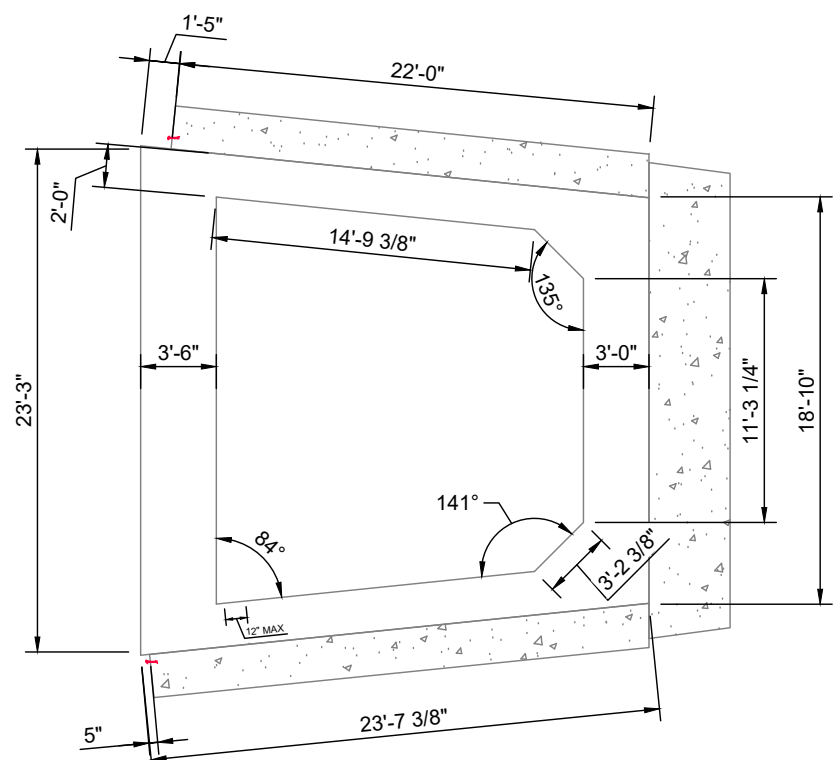
THIS DRAWING IS THE PROPERTY OF EFCO AND IS LOANED TO THE RECIPIENT IN CONFIDENCE. SEE NOTES AND SAFETY PAGE FOR CONTRACTOR'S RESPONSIBILITIES.

NO.	REVISION	DATE	BY

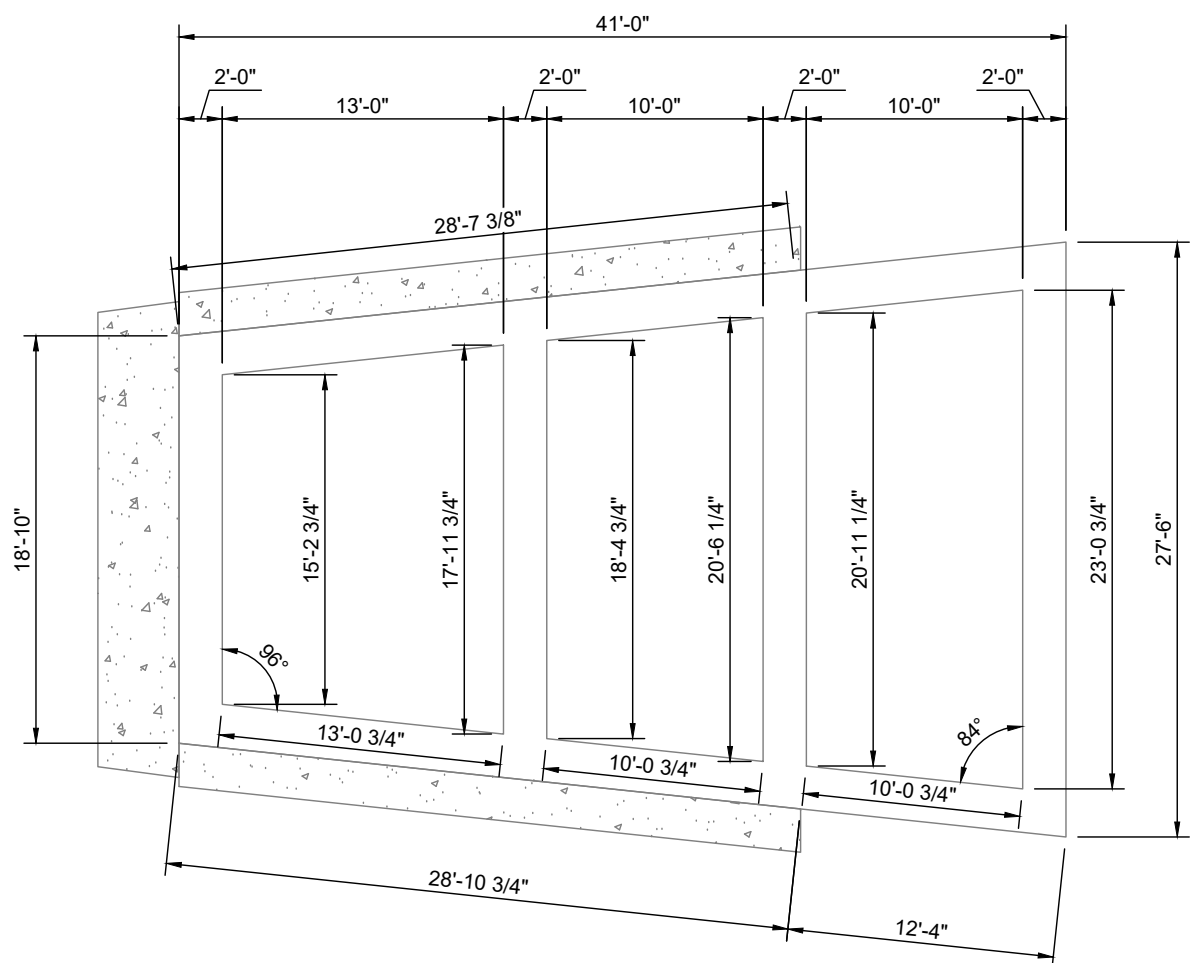
OCTOBER 12, 2020			
RELEASED FOR: CONSTRUCTION			
DWG TITLE: SYMBOLS & ABBREVIATIONS			
PROJECT: WEYLAND BRIDGE RE-INSTALLATION			
PROJECT LOCATION: BIG SUR, CA			
CONTRACTOR: HERBACK GENERAL ENGINEERING, LLC			
DETAILED BY:	DATE DRAWN:	ISSUING OFFICE:	
DAS	07FEB18	FRESNO	
CHECKED BY:	DATE CHECKED:	EFCO PROJECT NUMBER:	
ZSP	07FEB18	P300650	
AGREEMENT NO.		REVISION	
VARIES		002	-

Plot Date: Tuesday, October 13, 2020 @ 1:57:47 PM Last Saved: Monday, October 12, 2020 @ 1:26:49 PM Last Saved By: Torres, Pedro
 Sheet Set: 1760171-01 HERBACK GENERAL ENGINEERING, LLC File Path: \\EFCO\SNP001\Engineering\Agreements\2017_Jobs\1760171_Herback General Engineering, LLC\06 - Erection Drawings\1760171_Notes And Safety.dwg
 WEYLAND BRIDGE RE-INSTALLATION

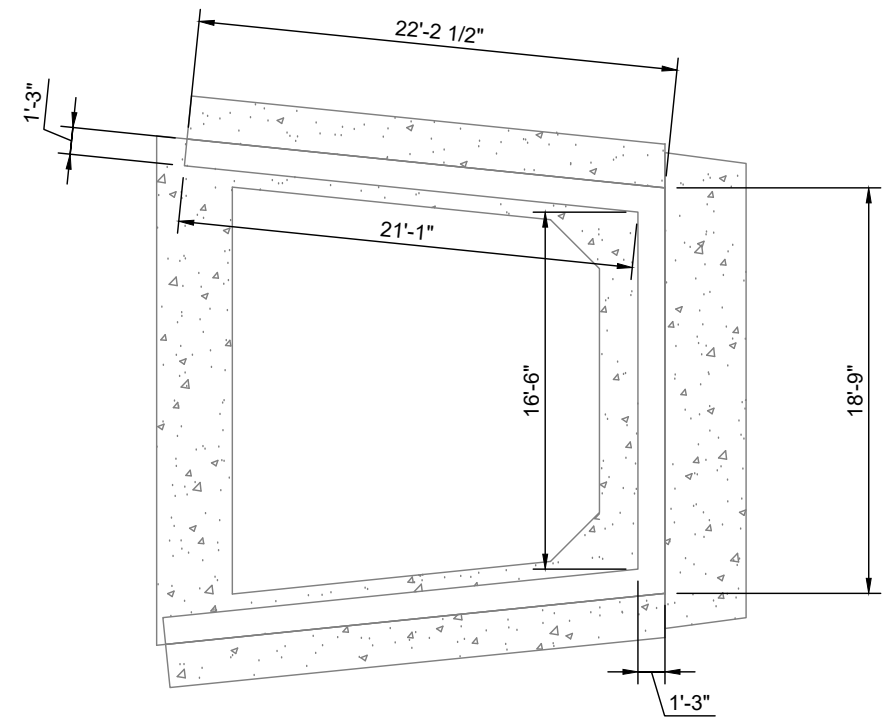
Plot Date: Tuesday, October 13, 2020 @ 1:57:53 PM Last Saved: Monday, October 12, 2020 @ 1:41:20 PM Last Saved By: Torres, Pedro
 Sheet Set: 1760171-01 HERBACK GENERAL ENGINEERING, LLC File Path: \\EFCF\SNP001\Engineering\Agreements\2017_Jobs\1760171_Herback General Engineering, LLC\101-105.dwg
 WEYLAND BRIDGE RE-INSTALLATION



PLAN VIEW - POUR #1
WEST ABUTMENT



PLAN VIEW - POUR #3
EAST ABUTMENT



PLAN VIEW - POUR #2
WEST ABUTMENT

DRAWING NOTES:

1. SEE PAGE 001-002 FOR GENERAL NOTES AND DEFINITION
2. SEE PAGES 500-505 FOR TYPICAL DETAILS

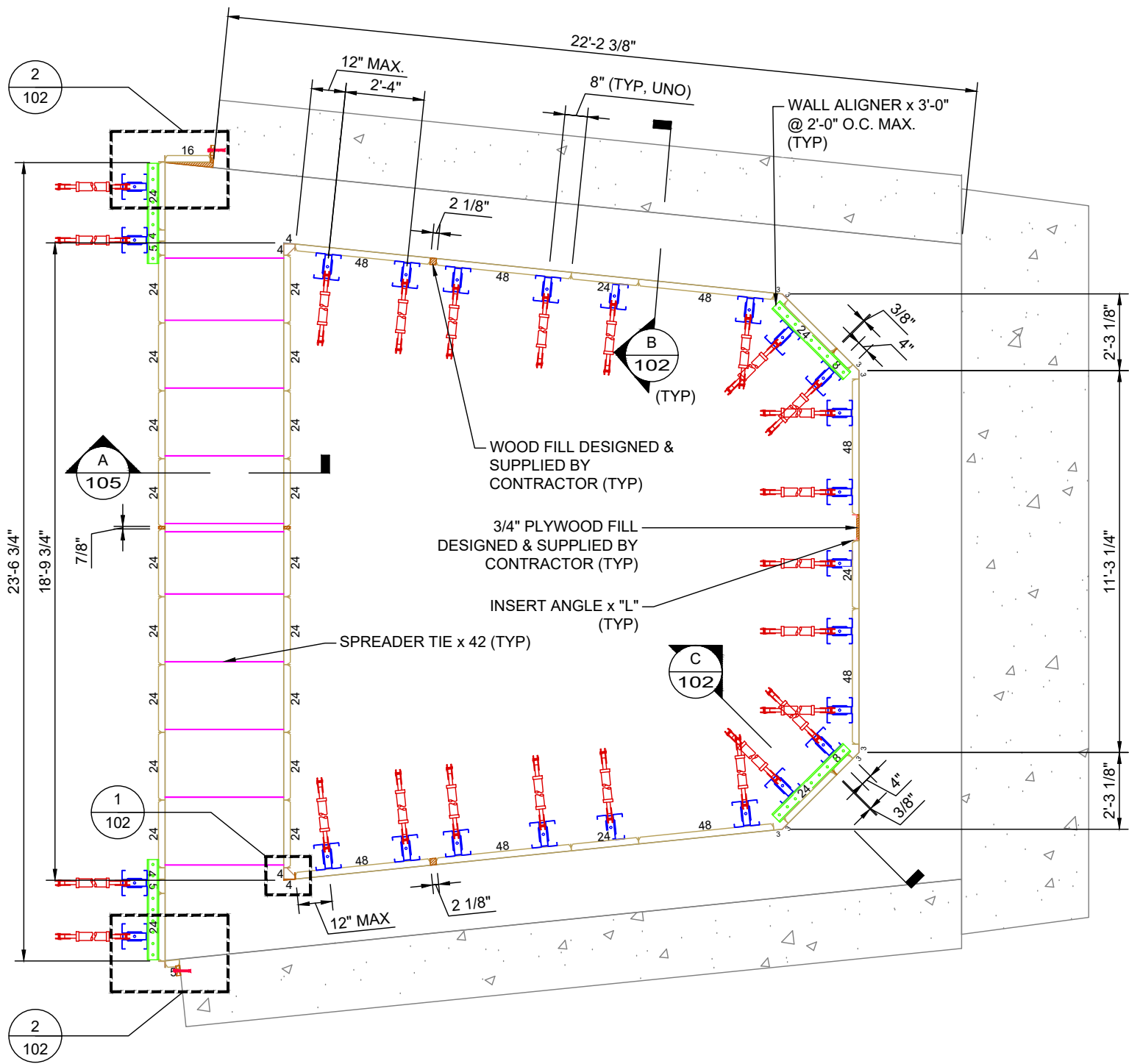


THIS DRAWING IS THE PROPERTY OF EFCO AND IS LOANED TO THE RECIPIENT IN CONFIDENCE. SEE NOTES AND SAFETY PAGE FOR CONTRACTOR'S RESPONSIBILITIES.

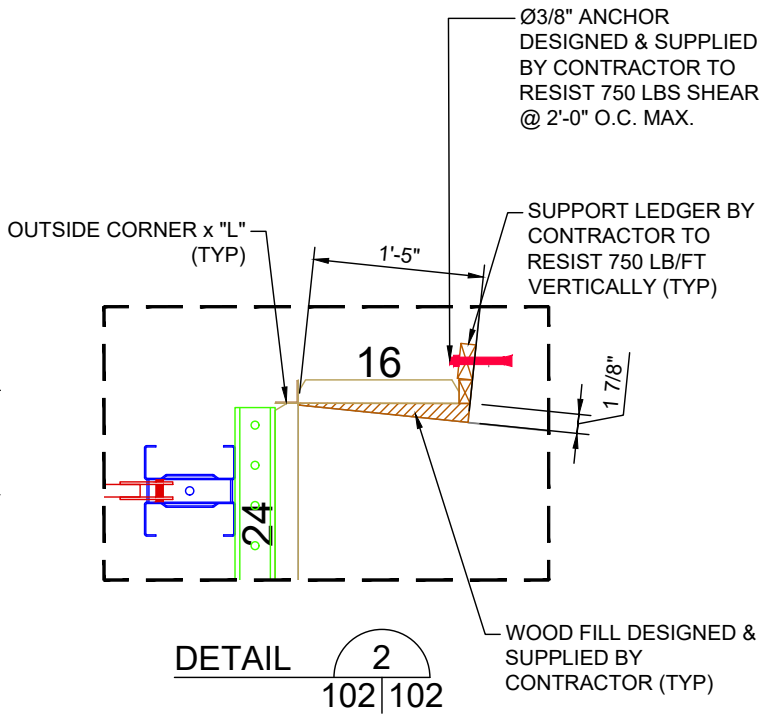
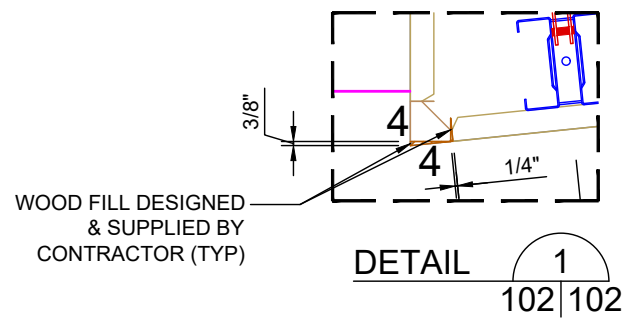
NO.	REVISION	DATE	BY

OCTOBER 12, 2020			
RELEASED FOR: CONSTRUCTION			
DWG TITLE: KEY PLAN			
PROJECT: WEYLAND BRIDGE RE-INSTALLATION			
PROJECT LOCATION: BIG SUR, CA			
CONTRACTOR: HERBACK GENERAL ENGINEERING, LLC			
DETAILED BY:	DATE DRAWN:	ISSUING OFFICE:	
DAS	07FEB18	FRESNO	
CHECKED BY:	DATE CHECKED:	EFCO PROJECT NUMBER:	
ZSP	07FEB18	P300650	
AGREEMENT NO.		REVISION	
VARIES		101	





PLAN VIEW - WEST ABUTMENT POUR #1



DRAWING NOTES:

1. SEE PAGE 001-002 FOR GENERAL NOTES AND DEFINITION
2. SEE PAGES 500-505 FOR TYPICAL DETAILS



THIS DRAWING IS THE PROPERTY OF EFCO AND IS LOANED TO THE RECIPIENT IN CONFIDENCE. SEE NOTES AND SAFETY PAGE FOR CONTRACTOR'S RESPONSIBILITIES.

NO.	REVISION	DATE	BY

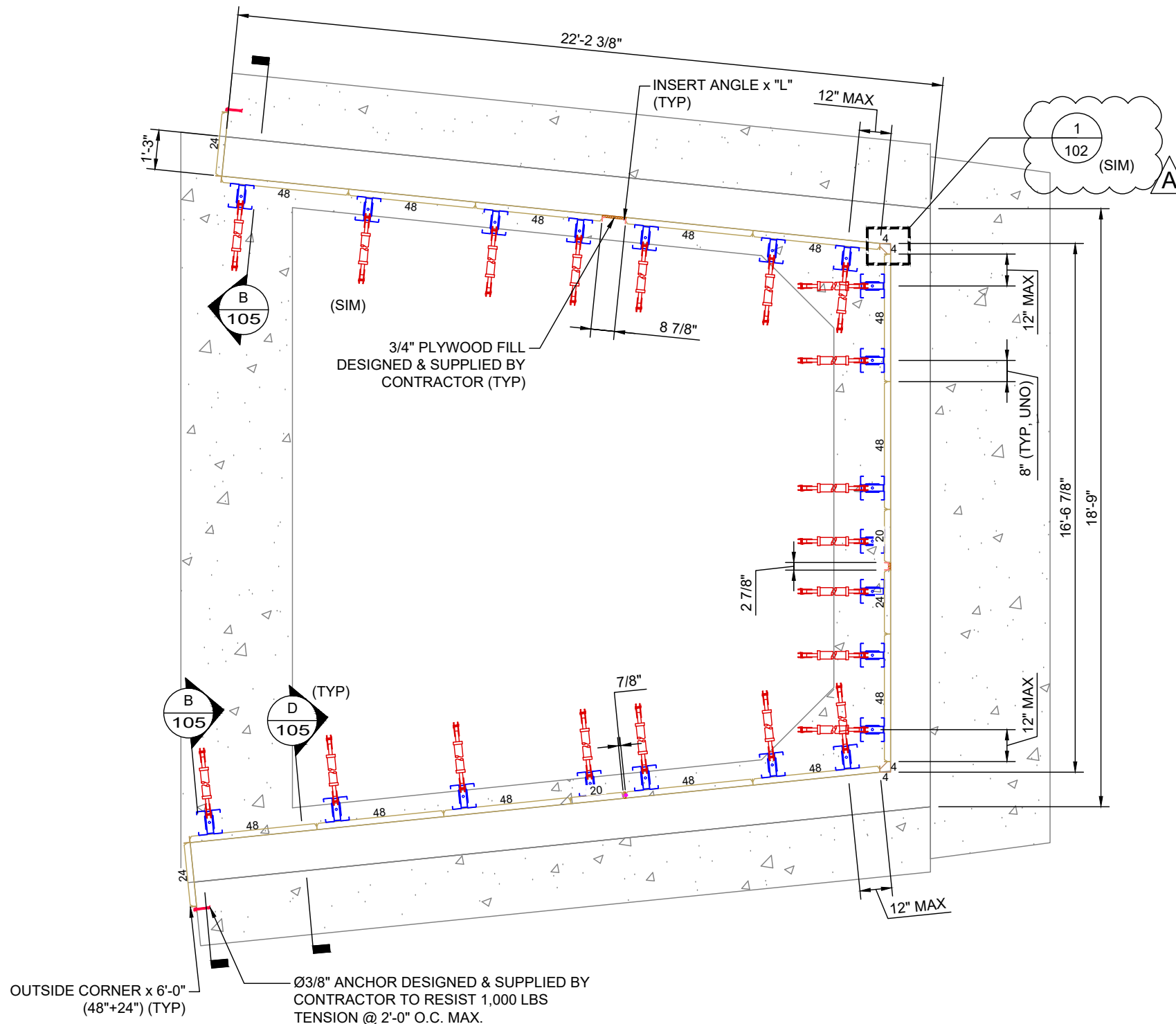
OCTOBER 12, 2020			
RELEASED FOR: CONSTRUCTION			
DWG TITLE: PLAN VIEW - WEST ABUTMENT POUR #1			
PROJECT: WEYLAND BRIDGE RE-INSTALLATION			
PROJECT LOCATION: BIG SUR, CA			
CONTRACTOR: HERBACK GENERAL ENGINEERING, LLC			
DETAILED BY:	DATE DRAWN:	ISSUING OFFICE:	
DAS	07FEB18	FRESNO	
CHECKED BY:	DATE CHECKED:	EFCO PROJECT NUMBER:	
ZSP	07FEB18	P300650	
AGREEMENT NO.		REVISION	
VARIES		102	

NOTICE

LATERAL CONCRETE FORM PRESSURE RATING = 750 PSF (5'-0" MAX) LIQUID HEAD CONCRETE PRESSURE ALLOWED. THEREFORE PLACEMENT RATE LIMITATIONS DO NOT APPLY.

Plot Date: Tuesday, October 13, 2020 @ 1:57:54 PM Last Saved: Monday, October 12, 2020 @ 1:41:20 PM Last Saved By: Torres, Pedro
 Sheet Set: 1760171-01 HERBACK GENERAL ENGINEERING, LLC File Path: \\EFCO\NP001\Engineering\Agreements\2017_Jobs\1760171_Herback General Engineering, LLC\06 - Erection Drawings\1760171_101-105.dwg
 Weyland Bridge Re-Installation

Plot Date: Tuesday, October 13, 2020 @ 1:57:55 PM Last Saved: Monday, October 12, 2020 @ 1:41:20 PM Last Saved By: Torres, Pedro
 Sheet Set: 1760171-01 HERBACK GENERAL ENGINEERING, LLC File Path: \\EFCF\SNP001\Engineering\Agreements\2017_Jobs\1760171_Herback General Engineering, LLC\06 - Erection Drawings\1760171_101-105.dwg



PLAN VIEW - WEST ABUTMENT POUR #2

NOTICE
 LATERAL CONCRETE FORM PRESSURE RATING = 750 PSF (5'-0" MAX) LIQUID HEAD CONCRETE PRESSURE ALLOWED. THEREFORE PLACEMENT RATE LIMITATIONS DO NOT APPLY.

- DRAWING NOTES:**
- SEE PAGE 001-002 FOR GENERAL NOTES AND DEFINITION
 - SEE PAGES 500-505 FOR TYPICAL DETAILS

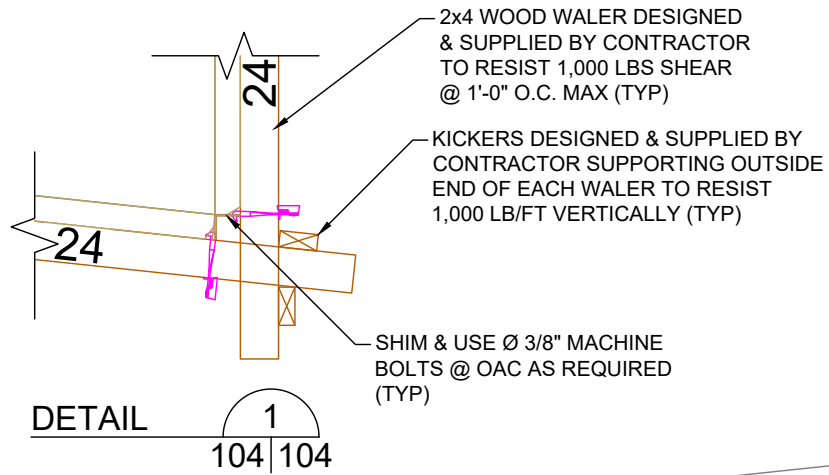


THIS DRAWING IS THE PROPERTY OF EFCO AND IS LOANED TO THE RECIPIENT IN CONFIDENCE. SEE NOTES AND SAFETY PAGE FOR CONTRACTOR'S RESPONSIBILITIES.

A	DETAIL CALLOUT ADDED	12OCT20	PJT
NO.	REVISION	DATE	BY

OCTOBER 12, 2020			
RELEASED FOR: CONSTRUCTION			
DWG TITLE: PLAN VIEW - WEST ABUTMENT POUR #2			
PROJECT: WEYLAND BRIDGE RE-INSTALLATION			
PROJECT LOCATION: BIG SUR, CA			
CONTRACTOR: HERBACK GENERAL ENGINEERING, LLC			
DETAILED BY	DATE DRAWN	ISSUING OFFICE	
DAS	07FEB18	FRESNO	
CHECKED BY	DATE CHECKED	EFCO PROJECT NUMBER	
ZSP	07FEB18	P300650	
AGREEMENT NO.		REVISION	
VARIES		103	
		A	

Plot Date: Tuesday, October 13, 2020 @ 1:57:56 PM Last Saved: Monday, October 12, 2020 @ 1:41:20 PM Last Saved By: Torres, Pedro
 Sheet Set: 1760171-01 HERBACK GENERAL ENGINEERING, LLC File Path: \\EFCF\SNP001\Engineering\Agreements\2017_Jobs\1760171_Herback General Engineering, LLC\06 - Erection Drawings\1760171_01-105.dwg
 Weyland Bridge Re-Installation



NOTICE

LATERAL CONCRETE FORM PRESSURE RATING = 750 PSF (5'-0" MAX) LIQUID HEAD CONCRETE PRESSURE ALLOWED. THEREFORE PLACEMENT RATE LIMITATIONS DO NOT APPLY.

- DRAWING NOTES:**
- SEE PAGE 001-002 FOR GENERAL NOTES AND DEFINITION
 - SEE PAGES 500-505 FOR TYPICAL DETAILS

2x4 WOOD WALER DESIGNED & SUPPLIED BY CONTRACTOR TO RESIST 1,000 LBS SHEAR @ 1'-0" O.C. MAX (TYP)

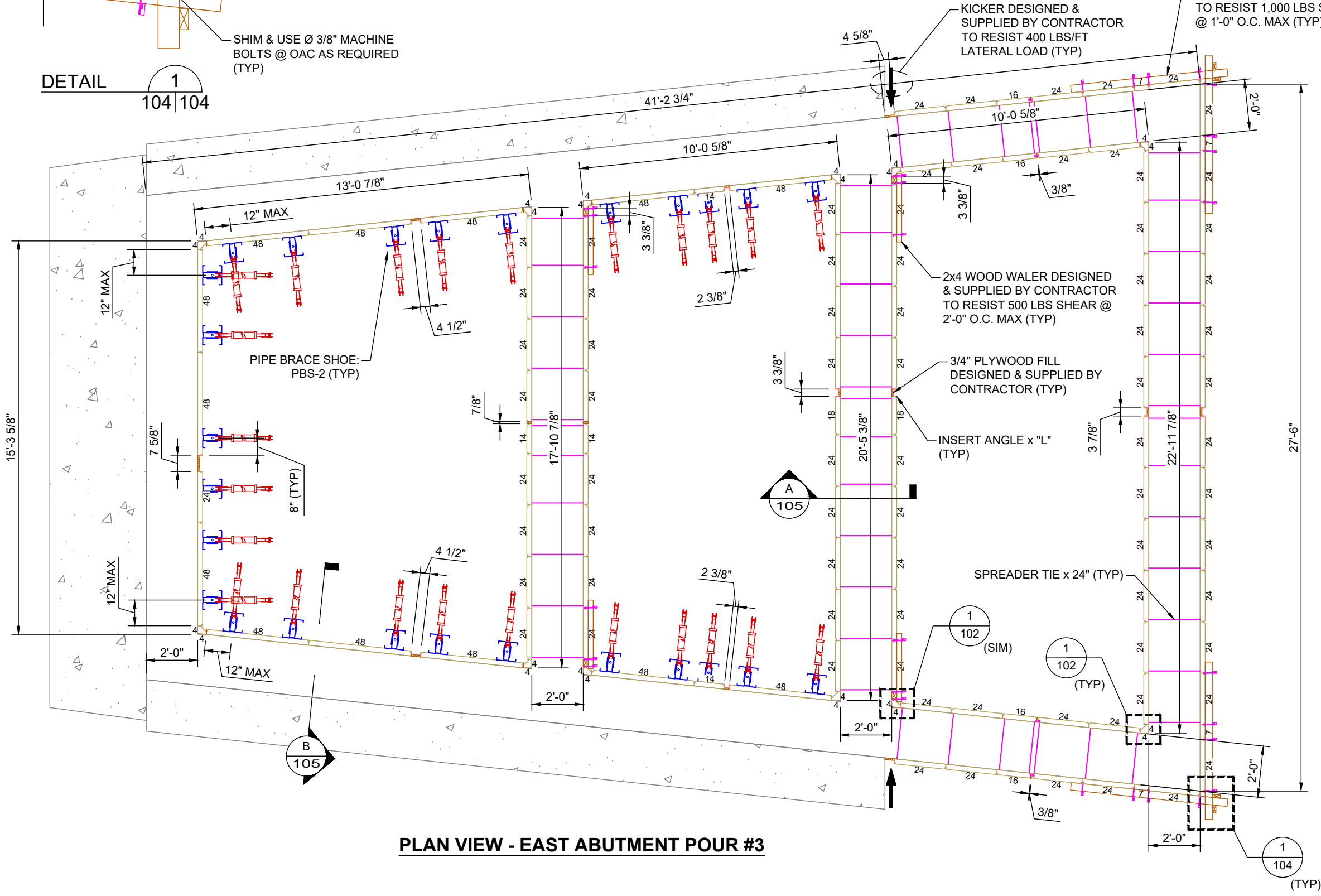
KICKER DESIGNED & SUPPLIED BY CONTRACTOR TO RESIST 400 LBS/FT LATERAL LOAD (TYP)

2x4 WOOD WALER DESIGNED & SUPPLIED BY CONTRACTOR TO RESIST 500 LBS SHEAR @ 2'-0" O.C. MAX (TYP)

3/4" PLYWOOD FILL DESIGNED & SUPPLIED BY CONTRACTOR (TYP)

INSERT ANGLE x "L" (TYP)

SPREADER TIE x 24" (TYP)



PLAN VIEW - EAST ABUTMENT POUR #3



FORMING AND SHORING EQUIPMENT FOR CONCRETE CONSTRUCTION
 HOME OFFICE DES MOINES, IOWA, U.S.A.
 DISTRICT OFFICES WORLDWIDE

THIS DRAWING IS THE PROPERTY OF EFCO AND IS LOANED TO THE RECIPIENT IN CONFIDENCE. SEE NOTES AND SAFETY PAGE FOR CONTRACTOR'S RESPONSIBILITIES.

NO.	REVISION	DATE	BY

RELEASED FOR: **OCTOBER 12, 2020 CONSTRUCTION**

DWG TITLE: **PLAN VIEW - EAST ABUTMENT POUR #3**

PROJECT: **WEYLAND BRIDGE RE-INSTALLATION**

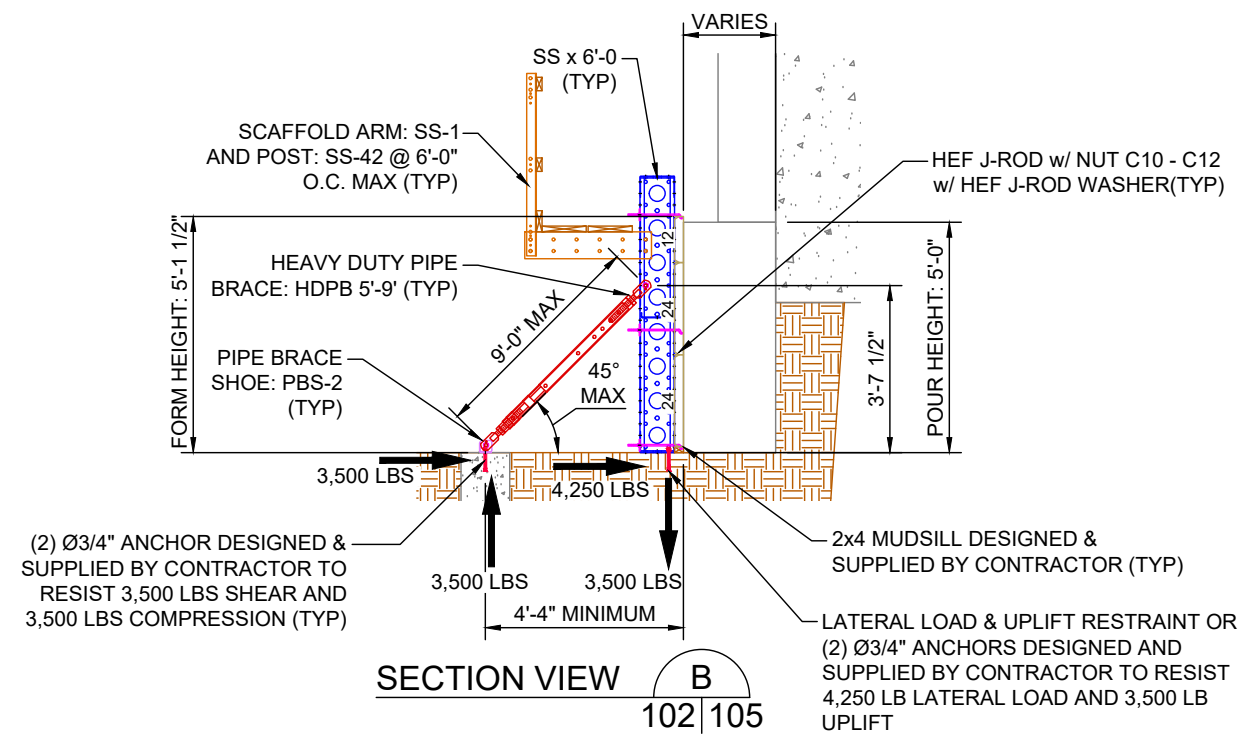
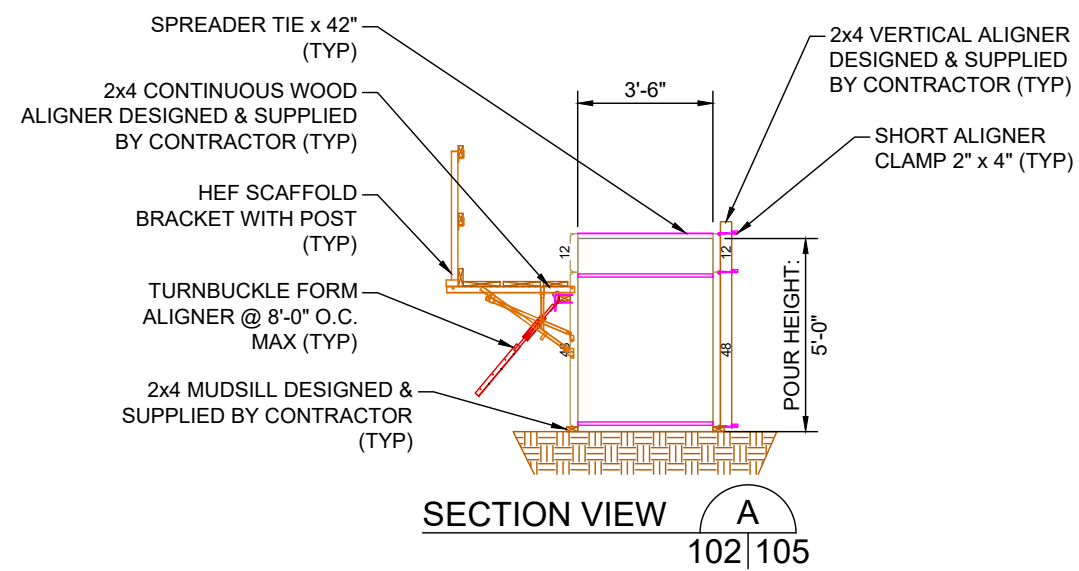
PROJECT LOCATION: **BIG SUR, CA**

CONTRACTOR: **HERBACK GENERAL ENGINEERING, LLC**

DETAILED BY:	DATE DRAWN:	ISSUING OFFICE:
DAS	07FEB18	FRESNO
CHECKED BY:	DATE CHECKED:	EFCO PROJECT NUMBER:
ZSP	07FEB18	P300650
AGREEMENT NO.		REVISION:
		104 -

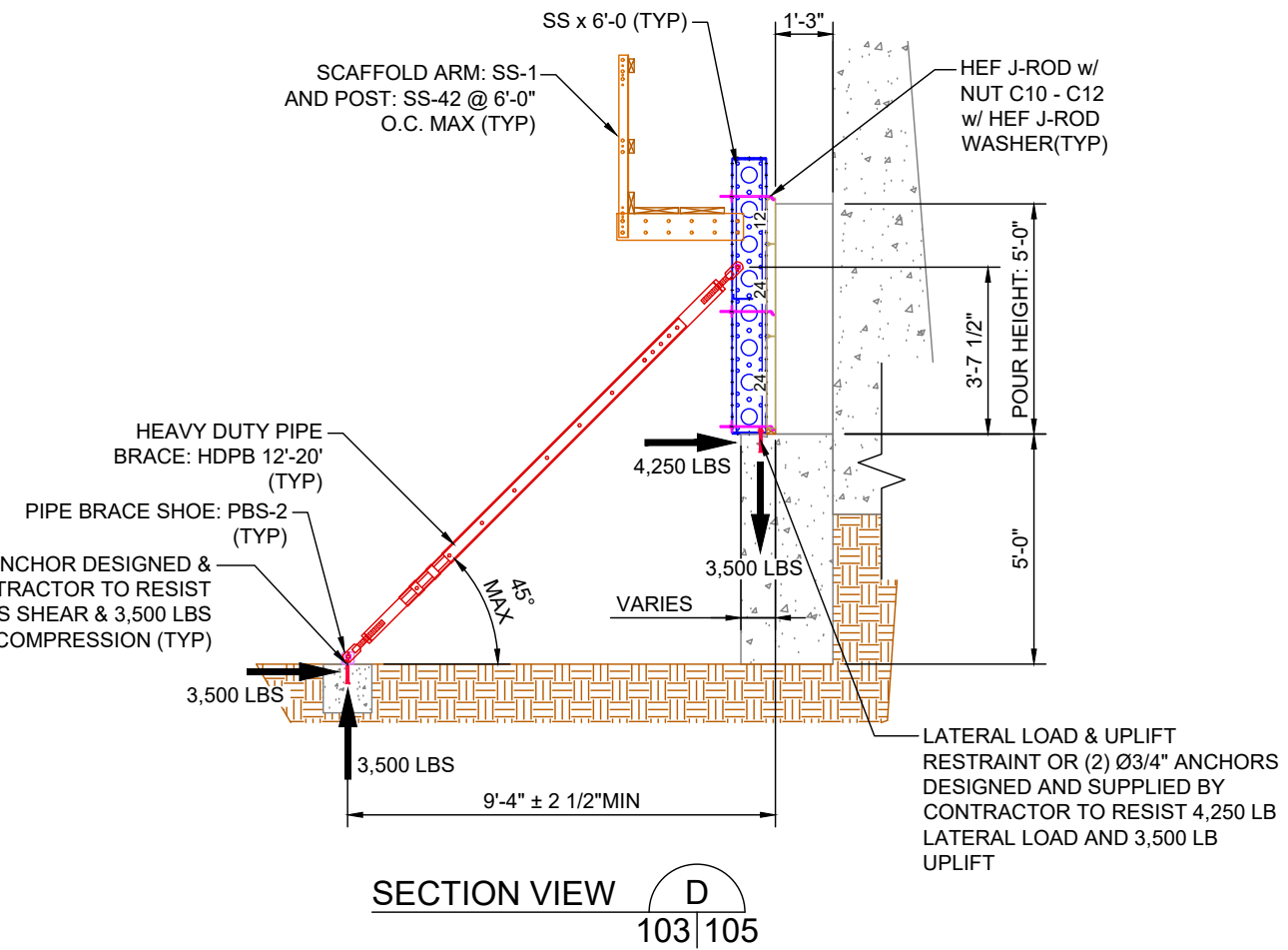
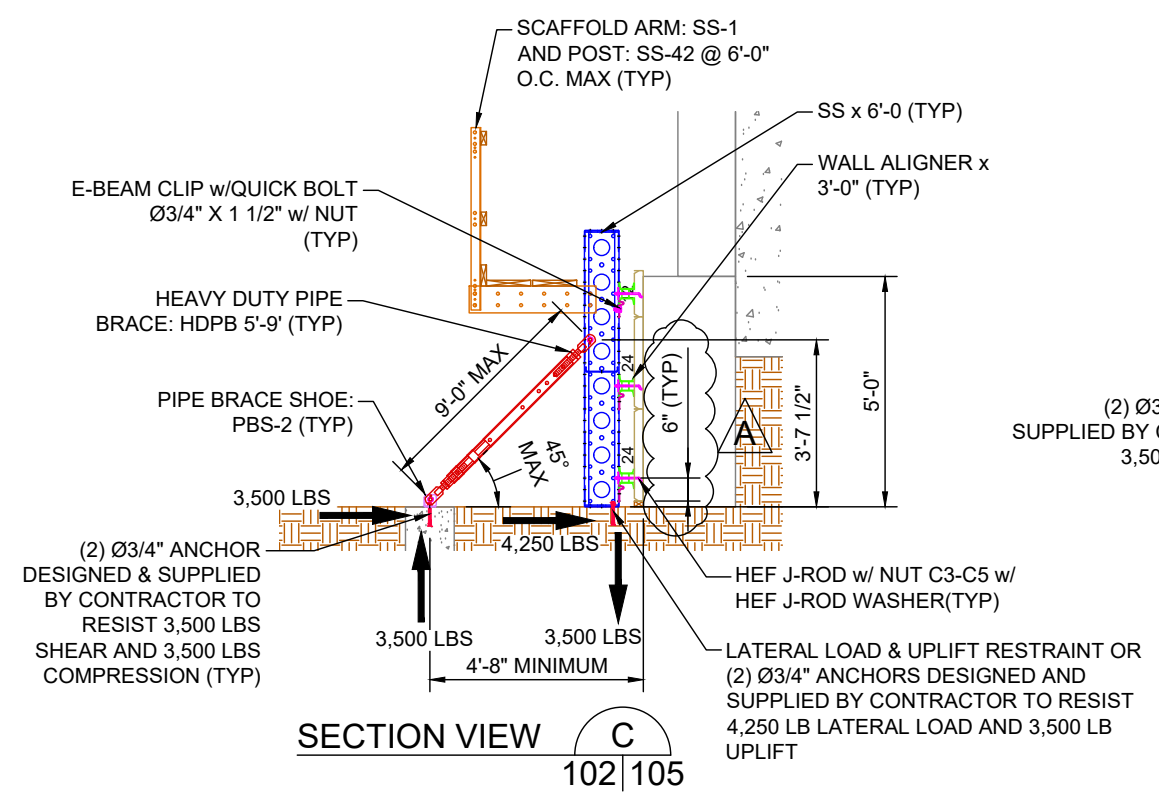
VARIES

Plot Date: Tuesday, October 13, 2020 @ 1:57:57 PM Last Saved: Monday, October 12, 2020 @ 1:41:20 PM Last Saved By: Torres, Pedro
 Sheet Set: 1760171-01 HERBACK GENERAL ENGINEERING, LLC File Path: \\EFCO\SNP001\Engineering\Agreements\2017_Jobs\1760171_Herback General Engineering, LLC\Drawings\1760171_101-105.dwg
 Weyland Bridge Re-Installation



NOTICE

LATERAL CONCRETE FORM PRESSURE RATING = 750 PSF (5'-0" MAX) LIQUID HEAD CONCRETE PRESSURE ALLOWED. THEREFORE PLACEMENT RATE LIMITATIONS DO NOT APPLY.



DRAWING NOTES:

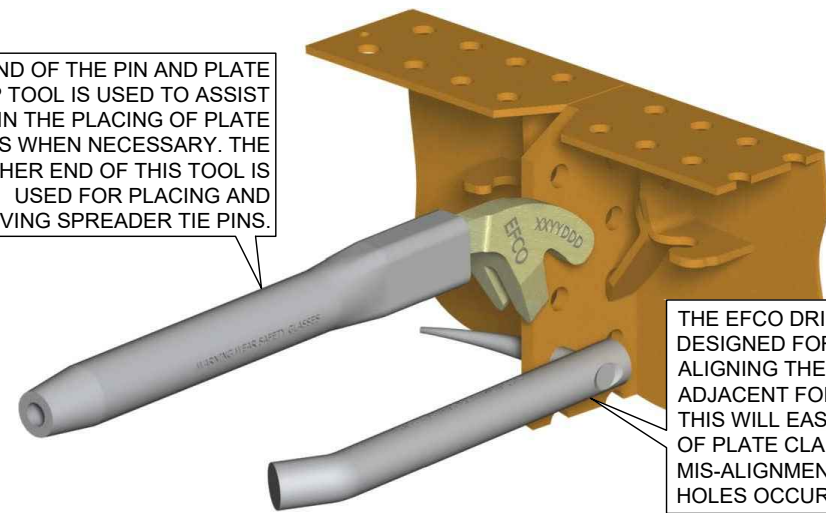
- SEE PAGE 001-002 FOR GENERAL NOTES AND DEFINITION
- SEE PAGES 500-505 FOR TYPICAL DETAILS



THIS DRAWING IS THE PROPERTY OF EFCO AND IS LOANED TO THE RECIPIENT IN CONFIDENCE. SEE NOTES AND SAFETY PAGE FOR CONTRACTOR'S RESPONSIBILITIES.

A	DIMENSION ADDED	12OCT20	PJT
NO.	REVISION	DATE	BY
OCTOBER 12, 2020			
RELEASED FOR: CONSTRUCTION			
DWG TITLE: SECTION VIEWS			
PROJECT: WEYLAND BRIDGE RE-INSTALLATION			
PROJECT LOCATION: BIG SUR, CA			
CONTRACTOR: HERBACK GENERAL ENGINEERING, LLC			
DETAILED BY:	DATE DRAWN:	ISSUING OFFICE:	
DAS	07FEB18	FRESNO	
CHECKED BY:	DATE CHECKED:	EFCO PROJECT NUMBER:	
ZSP	07FEB18	P300650	
AGREEMENT NO.		REVISION	
VARIES		105	A

ONE END OF THE PIN AND PLATE CLAMP TOOL IS USED TO ASSIST IN THE PLACING OF PLATE CLAMPS WHEN NECESSARY. THE OTHER END OF THIS TOOL IS USED FOR PLACING AND REMOVING SPREADER TIE PINS.

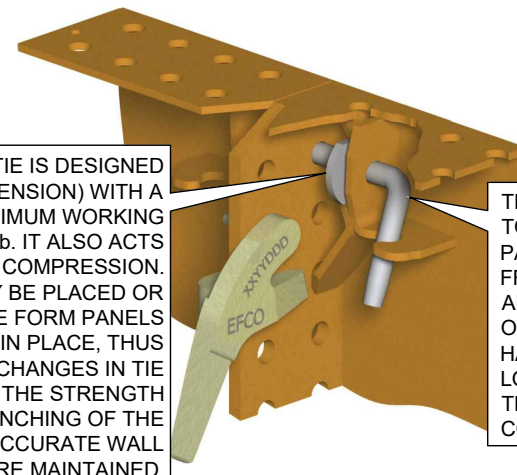


THE EFCO DRIFT PIN IS DESIGNED FOR USE IN ALIGNING THE HOLES IN ADJACENT FORM FLANGES. THIS WILL EASE THE PLACING OF PLATE CLAMPS WHEN MIS-ALIGNMENT OF FLANGE HOLES OCCURS.

HAND-E-FORM CLAMP

1

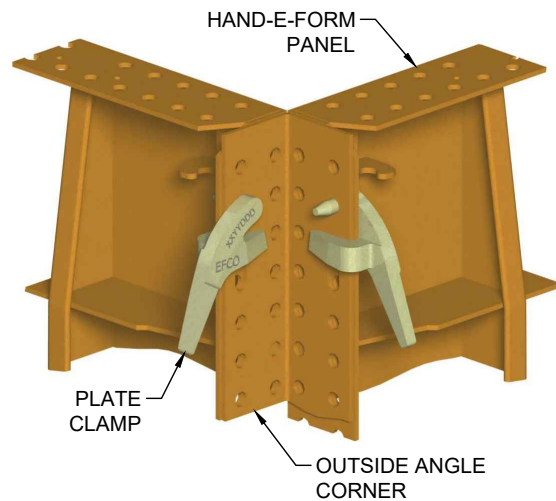
THE EFCO SPREADER TIE IS DESIGNED (AS A TIE IN TENSION) WITH A RECOMMENDED MAXIMUM WORKING LOAD OF ABOUT 4800 lb. IT ALSO ACTS AS A SPREADER IN COMPRESSION. SPREADER TIES MAY BE PLACED OR REMOVED AFTER THE FORM PANELS ARE CLAMPED IN PLACE, THUS PERMITTING EASY CHANGES IN TIE LOCATION. DUE TO THE STRENGTH AND THE EXACT PUNCHING OF THE EFCO SPREADER TIE, ACCURATE WALL DIMENSIONS ARE MAINTAINED.



THE EFCO SPREADER TIE PINS HELP TO ALIGN THE FACES OF THE FORM PANELS AND TRANSFER THE LOADS FROM ONE FORM PANEL TO ANOTHER, THUS PREVENTING OFF-SETS AT THE FORM JOINTS. THE HANDLE OF THE SPREADER TIE PIN IS LOCKED IN POSITION TO PREVENT THE PIN FROM FALLING OUT WHILE CONCRETE IS BEING PLACED.

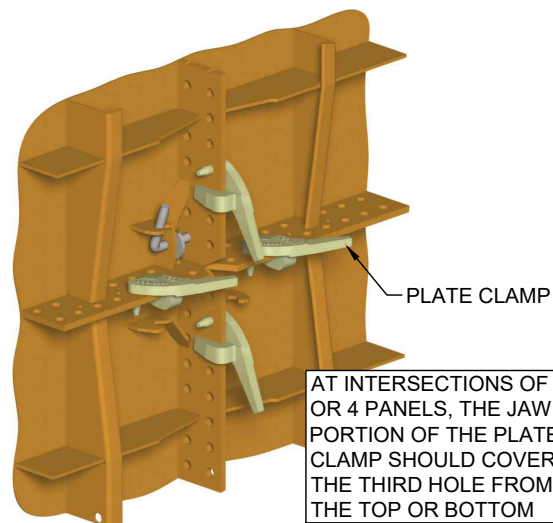
HAND-E-FORM SPREADER TIE

2



OUTSIDE ANGLE CORNER

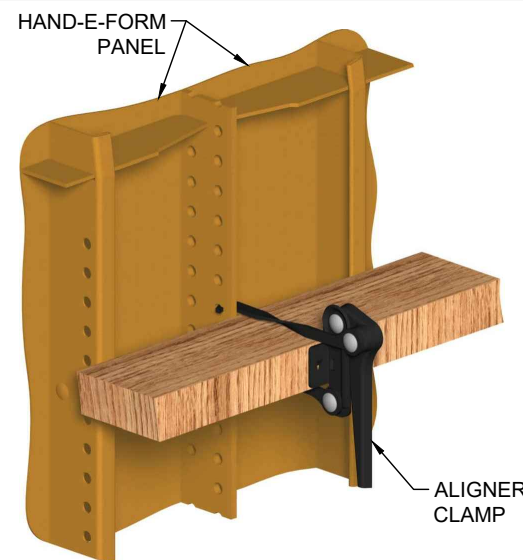
3



AT INTERSECTIONS OF 3 OR 4 PANELS, THE JAW PORTION OF THE PLATE CLAMP SHOULD COVER THE THIRD HOLE FROM THE TOP OR BOTTOM

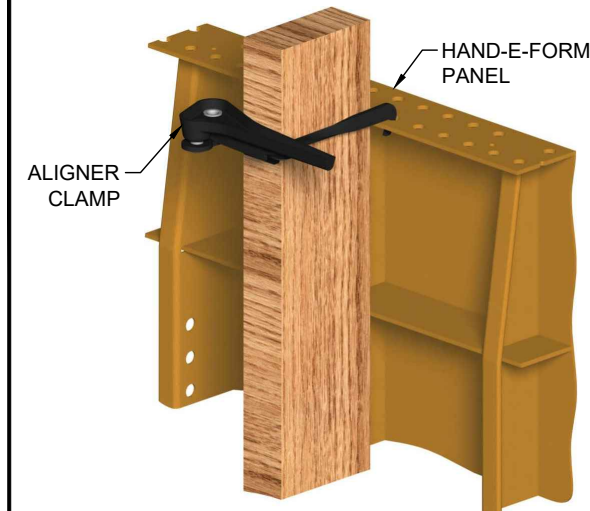
HAND-E-FORM PANEL INTERSECTION

4



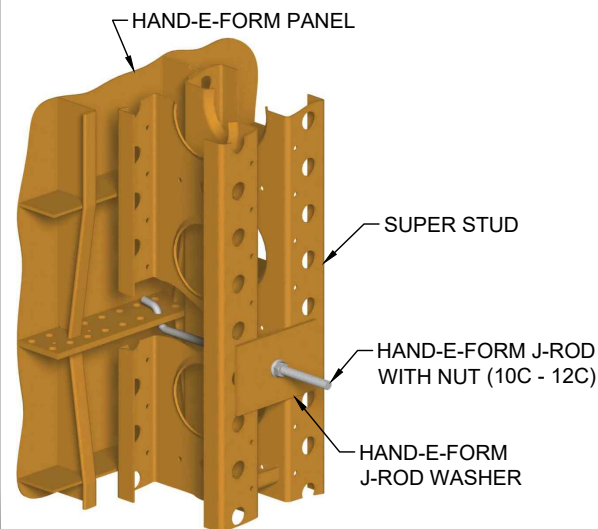
ALIGNER CLAMP

5



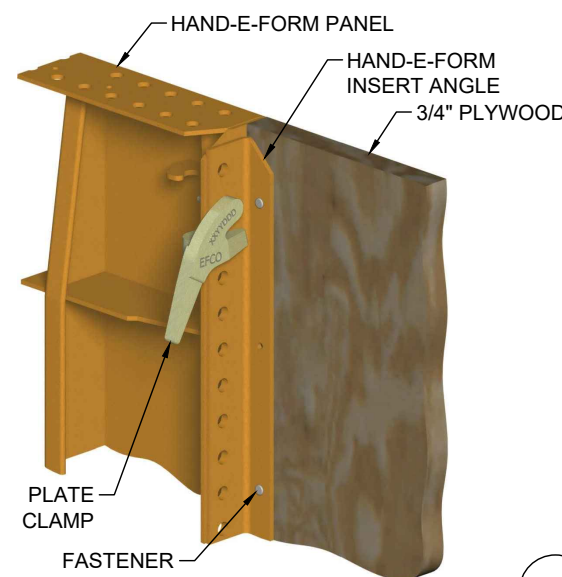
ALIGNER CLAMP

6



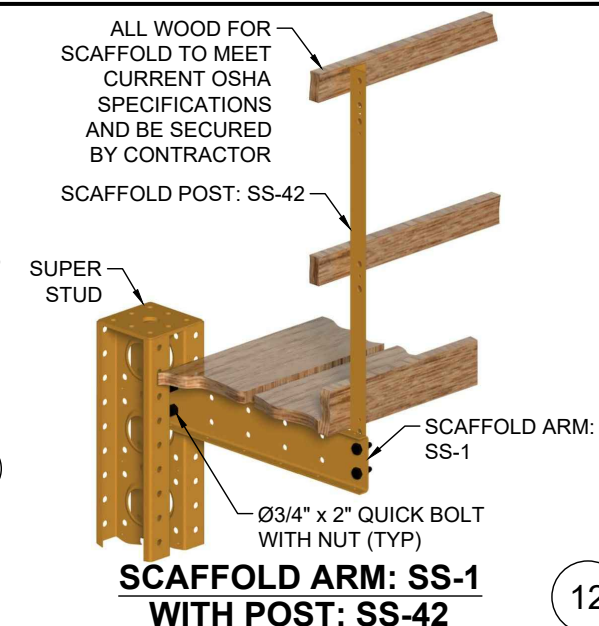
SUPER STUD TO HAND-E-FORM WITH J-ROD

7



INSERT ANGLE

8



SCAFFOLD ARM: SS-1 WITH POST: SS-42

12

DRAWING NOTES:

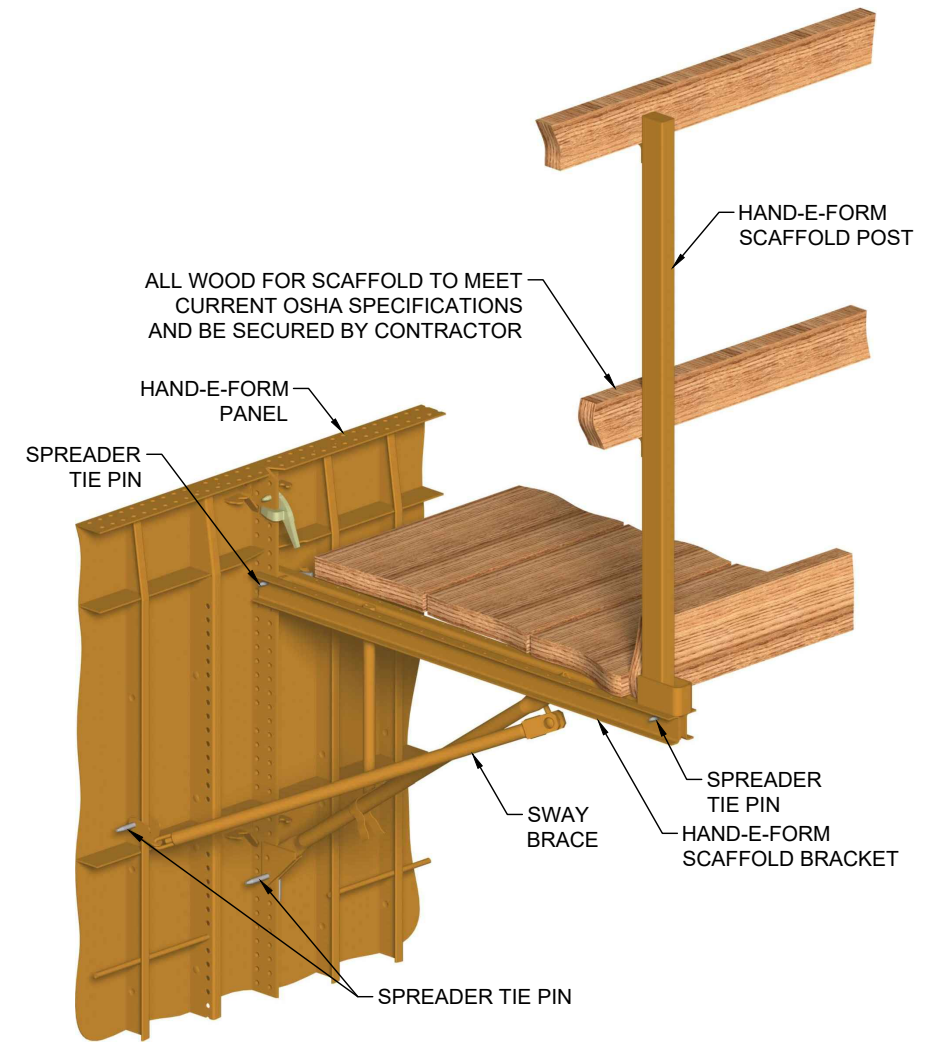


THIS DRAWING IS THE PROPERTY OF EFCO AND IS LOANED TO THE RECIPIENT IN CONFIDENCE. SEE NOTES AND SAFETY PAGE FOR CONTRACTOR'S RESPONSIBILITIES.

A	DETAIL REMOVED	12OCT20	PJT
NO.	REVISION	DATE	BY
OCTOBER 12, 2020			
RELEASED FOR: CONSTRUCTION			
DWG. TITLE: HAND-E-FORM DETAILS			
PROJECT: WEYLAND BRIDGE RE-INSTALLATION			
PROJECT LOCATION: BIG SUR, CA			
CONTRACTOR: HERBACK GENERAL ENGINEERING, LLC			
DETAILED BY:	DATE DRAWN:	ISSUING OFFICE:	
DAS	07FEB18	FRESNO	
CHECKED BY:	DATE CHECKED:	EFCO PROJECT NUMBER:	
ZSP	07FEB18	P300650	
AGREEMENT NO.		REVISION	
VARIES		500	A

Plot Date: Tuesday, October 13, 2020 @ 1:58:05 PM Last Saved: Monday, October 12, 2020 @ 1:35:46 PM Last Saved By: Torres, Pedro
 File Path: \\EFCO-SNP001\Engineering\Agreements\2017_Jobs\1760171_Herback General Engineering, LLC\06 - Erection Drawings\1760171_HEF_Details.dwg
 Sheet Set: #####

Plot Date: Tuesday, October 13, 2020 @ 1:58:07 PM Last Saved: Monday, October 12, 2020 @ 1:35:46 PM Last Saved By: Torres, Pedro
 File Path: \\EFCO-SNP001\Engineering\Agreements\2017 Jobs\1760171_Herback General Engineering, LLC\06 - Erection Drawings\1760171_HEF Details.dwg
 Sheet Set: ###



HAND-E-FORM SCAFFOLD

10

A

DRAWING NOTES:



FORMING AND SHORING EQUIPMENT FOR CONCRETE CONSTRUCTION
 HOME OFFICE DES MOINES, IOWA, U.S.A.
 DISTRICT OFFICES WORLDWIDE

THIS DRAWING IS THE PROPERTY OF EFCO AND IS LOANED TO THE RECIPIENT IN CONFIDENCE. SEE NOTES AND SAFETY PAGE FOR CONTRACTOR'S RESPONSIBILITIES.

A	DETAILS REMOVED	12OCT20	PJT
NO.	REVISION	DATE	BY

OCTOBER 12, 2020

RELEASED FOR: **CONSTRUCTION**

DWG TITLE: **HAND-E-FORM DETAILS**

PROJECT: **WEYLAND BRIDGE RE-INSTALLATION**

PROJECT LOCATION: **BIG SUR, CA**

CONTRACTOR: **HERBACK GENERAL ENGINEERING, LLC**

		ISSUING OFFICE
		FRESNO
		EFCO PROJECT NUMBER
		P300650
		REVISION
		501
		A

VARIES

501

A