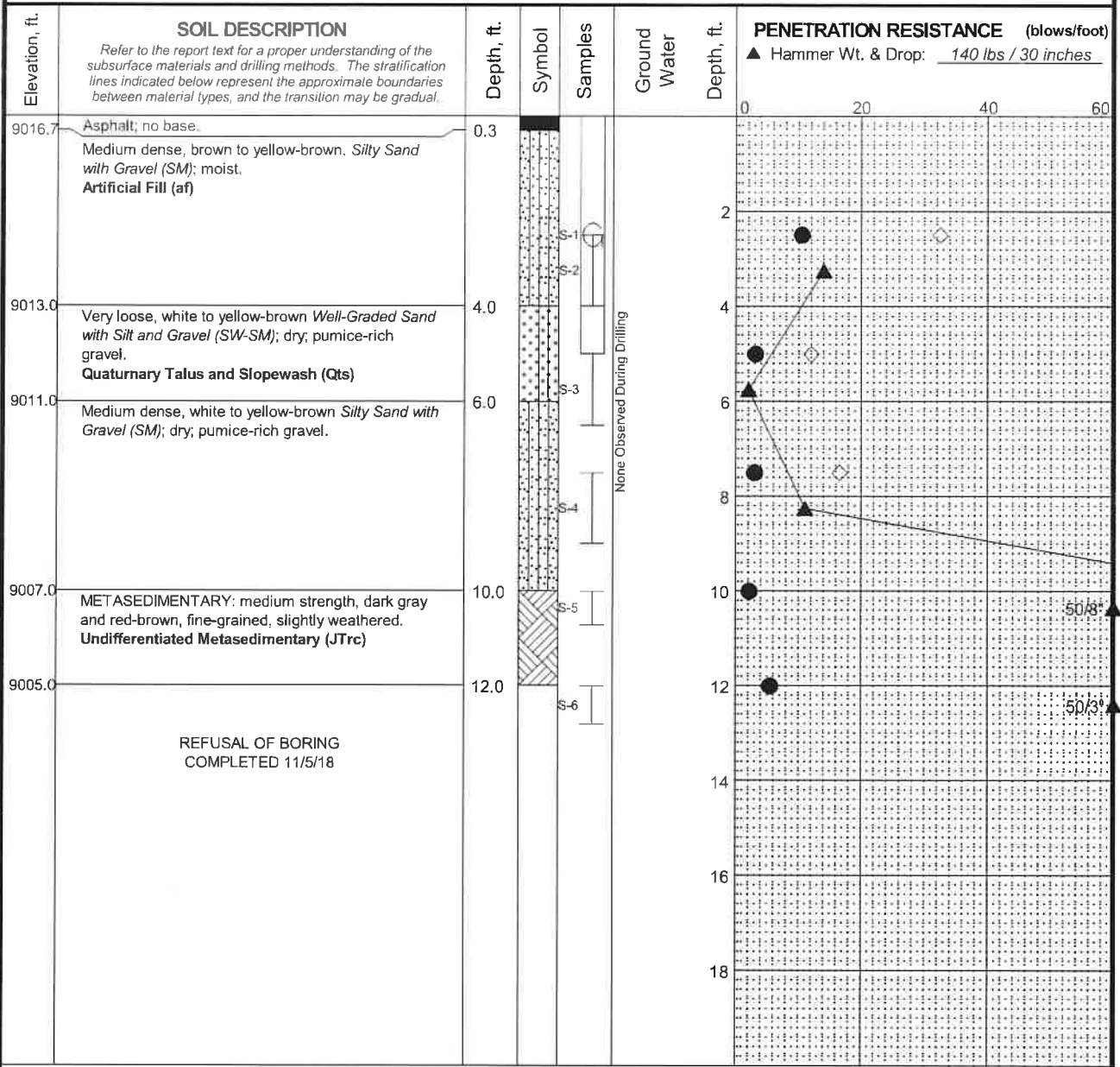


Total Depth: 12 ft. Latitude: 37.65540 ° Drilling Method: Hollow Stem Auger Hole Diam.: 8 in.
 Top Elevation: ~ 9017 ft. Longitude: -119.0634 " Drilling Company: 2R Drilling Rod Diam.: _____
 Vert. Datum: EGM96 Geoid Station: 30+90 ft. Drill Rig Equipment: CME 75 Hammer Type: Automatic
 Horiz. Datum: WGS84 Offset: N/A Other Comments: Hole located 5.4 feet from edge of pavement.



Log: SDW Rev: Typ: SDH

MASTER LOG E MC 100062.GPJ SHAN WIL_GDT 5/17/19

- LEGEND**
- * Sample Not Recovered
 - ◊ % Fines (<0.075mm)
 - Grab Sample
 - % Water Content
 - I 2.0" O.D. Split Spoon Sample

- NOTES**
- Refer to KEY for explanation of symbols, codes, abbreviations and definitions.
 - Groundwater level, if indicated above, is for the date specified and may vary.
 - USCS designation is based on visual-manual classification and selected lab testing.
 - The hole location was measured from existing site features and should be considered approximate.

Reds Meadow Road Improvements
FTFS 03S11(1)
Madera County, California

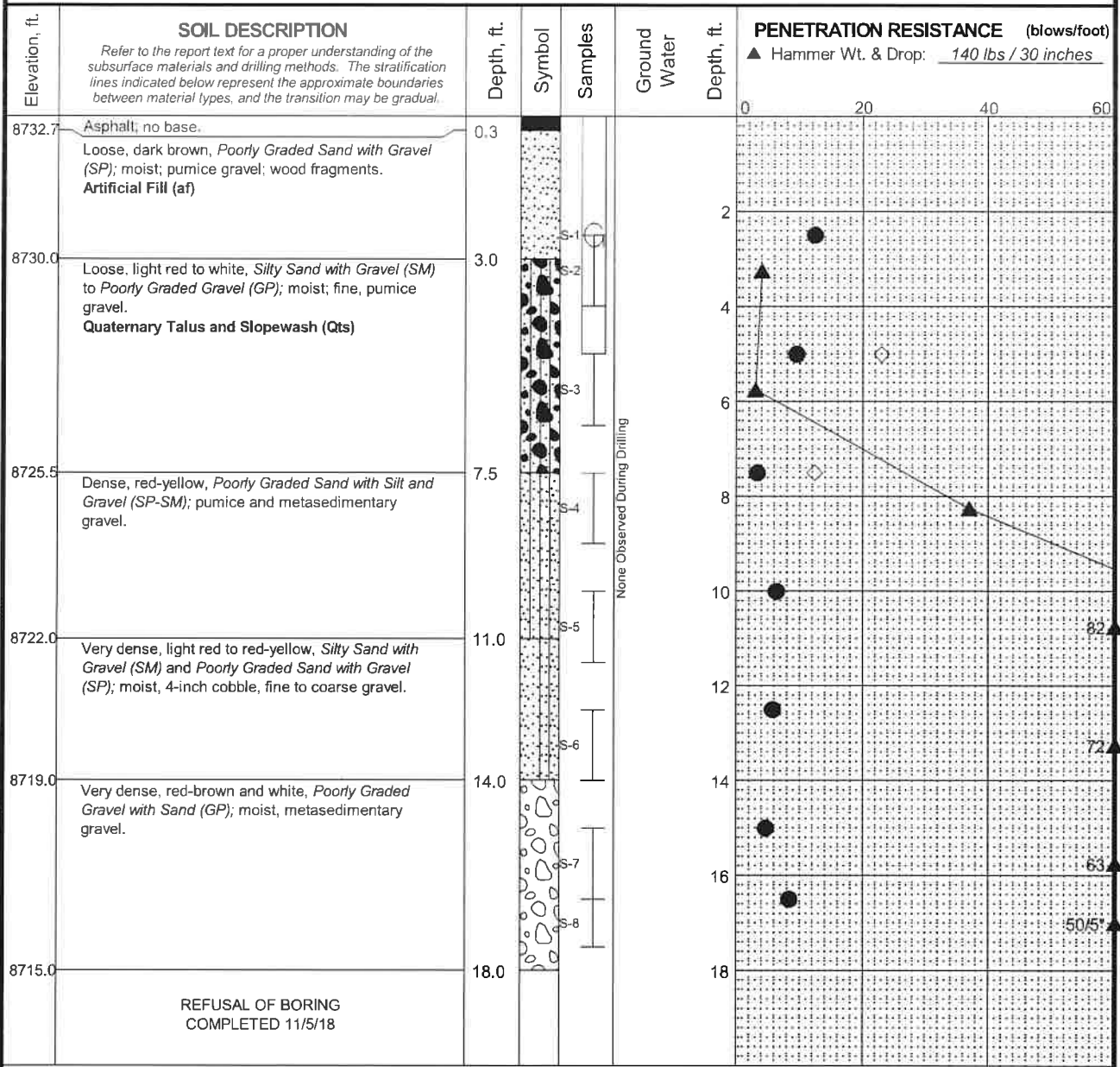
LOG OF BORING SW-B-47

January 2021 100062-003

SHANNON & WILSON, INC.
Geotechnical and Environmental Consultants

FIG. A-59

Total Depth: 16.5 ft. Latitude: 37.66420 ° Drilling Method: Hollow Stem Auger Hole Diam.: 8 in.
 Top Elevation: ~ 8733 ft. Longitude: -119.0651 ° Drilling Company: 2R Drilling Rod Diam.: _____
 Vert. Datum: EGM96 Geoid Station: 65+50 ft. Drill Rig Equipment: CME 75 Hammer Type: Automatic
 Horiz. Datum: WGS84 Offset: N/A Other Comments: Hole located 5.5 feet from edge of pavement.



Log: SDW Rev: Typ: SDH

MASTER LOG: E MC 100062.GPJ SHAN WIL.GDT 5/17/19

- LEGEND**
- * Sample Not Recovered
 - ☐ Grab Sample
 - ┆ 2.0" O.D. Split Spoon Sample

- ◇ % Fines (<0.075mm)
- % Water Content

NOTES

1. Refer to KEY for explanation of symbols, codes, abbreviations and definitions.
2. Groundwater level, if indicated above, is for the date specified and may vary.
3. USCS designation is based on visual-manual classification and selected lab testing.
4. The hole location was measured from existing site features and should be considered approximate.

Reds Meadow Road Improvements
FTFS 03S11(1)
Madera County, California

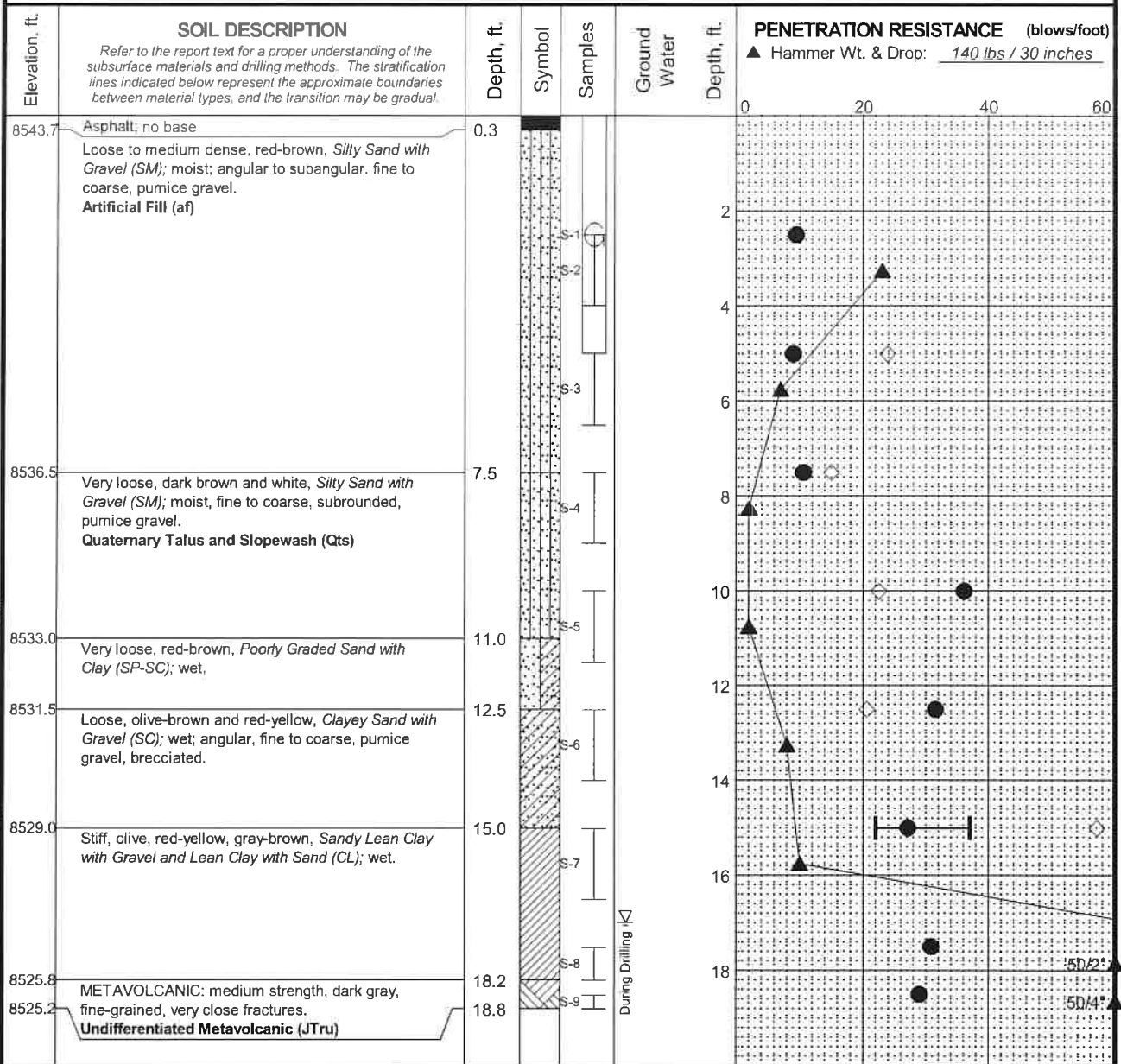
LOG OF BORING SW-B-48

January 2021 100062-003

SHANNON & WILSON, INC.
Geotechnical and Environmental Consultants

FIG. A-60

Total Depth: 18.5 ft. Latitude: 37.67136 ° Drilling Method: Hollow Stem Auger Hole Diam.: 8 in.
 Top Elevation: ~8544 ft. Longitude: -119.0694 ° Drilling Company: 2R Drilling Rod Diam.: _____
 Vert. Datum: EGM96 Geoid Station: 97+15 ft. Drill Rig Equipment: CME 75 Hammer Type: Automatic
 Horiz. Datum: WGS84 Offset: N/A Other Comments: Hole located 4.0 feet from edge of pavement.



Log: SDW Rev: Typ: SDH MASTER LOG E MC 100062.GPJ SHAN WILGDT 5/17/19

CONTINUED NEXT SHEET
LEGEND

- * Sample Not Recovered
- ☒ Grab Sample
- ⊔ 2.0" O.D. Split Spoon Sample
- ▽ Ground Water Level ATD
- Plastic Limit
- Natural Water Content
- Liquid Limit
- % Fines (<0.075mm)
- % Water Content

NOTES

1. Refer to KEY for explanation of symbols, codes, abbreviations and definitions.
2. Groundwater level, if indicated above, is for the date specified and may vary.
3. USCS designation is based on visual-manual classification and selected lab testing.
4. The hole location was measured from existing site features and should be considered approximate.

Reds Meadow Road Improvements
 FTFS 03S11(1)
 Madera County, California

LOG OF BORING SW-B-49

January 2021 100062-003

SHANNON & WILSON, INC.
 Geotechnical and Environmental Consultants

FIG. A-61
 Sheet 1 of 2

Total Depth: 18.5 ft. Latitude: 37,67136 ° Drilling Method: Hollow Stem Auger Hole Diam.: 8 in.
 Top Elevation: ~ 8544 ft. Longitude: -119.0694 ° Drilling Company: 2R Drilling Rod Diam.: _____
 Vert. Datum: EGM96 Geoid Station: 97+15 ft. Drill Rig Equipment: CME 75 Hammer Type: Automatic
 Horiz. Datum: WGS84 Offset: N/A Other Comments: Hole located 4.0 feet from edge of pavement.

Elevation, ft.	SOIL DESCRIPTION <i>Refer to the report text for a proper understanding of the subsurface materials and drilling methods. The stratification lines indicated below represent the approximate boundaries between material types, and the transition may be gradual.</i>	Depth, ft.	Symbol	Samples	Ground Water	Depth, ft.	PENETRATION RESISTANCE (blows/foot)			
							▲ Hammer Wt. & Drop: <u>140 lbs / 30 inches</u>			
						0	20	40	60	
	REFUSAL OF BORING COMPLETED 11/5/18									
						22				
						24				
						26				
						28				
						30				
						32				
						34				
						36				
						38				

MASTER LOG E MC 100062.GPJ SHAN_WIL.GDT 5/17/19 Log: SDW Rev. Typ: SDH

LEGEND

* Sample Not Recovered ▽ Ground Water Level ATD Plastic Limit —●— Liquid Limit ◇ % Fines (<0.075mm)
 ☒ Grab Sample Natural Water Content ● % Water Content
 ⊥ 2.0" O.D. Split Spoon Sample

- NOTES**
1. Refer to KEY for explanation of symbols, codes, abbreviations and definitions.
 2. Groundwater level, if indicated above, is for the date specified and may vary.
 3. USCS designation is based on visual-manual classification and selected lab testing.
 4. The hole location was measured from existing site features and should be considered approximate.

Reds Meadow Road Improvements
 FTFS 03S11(1)
 Madera County, California

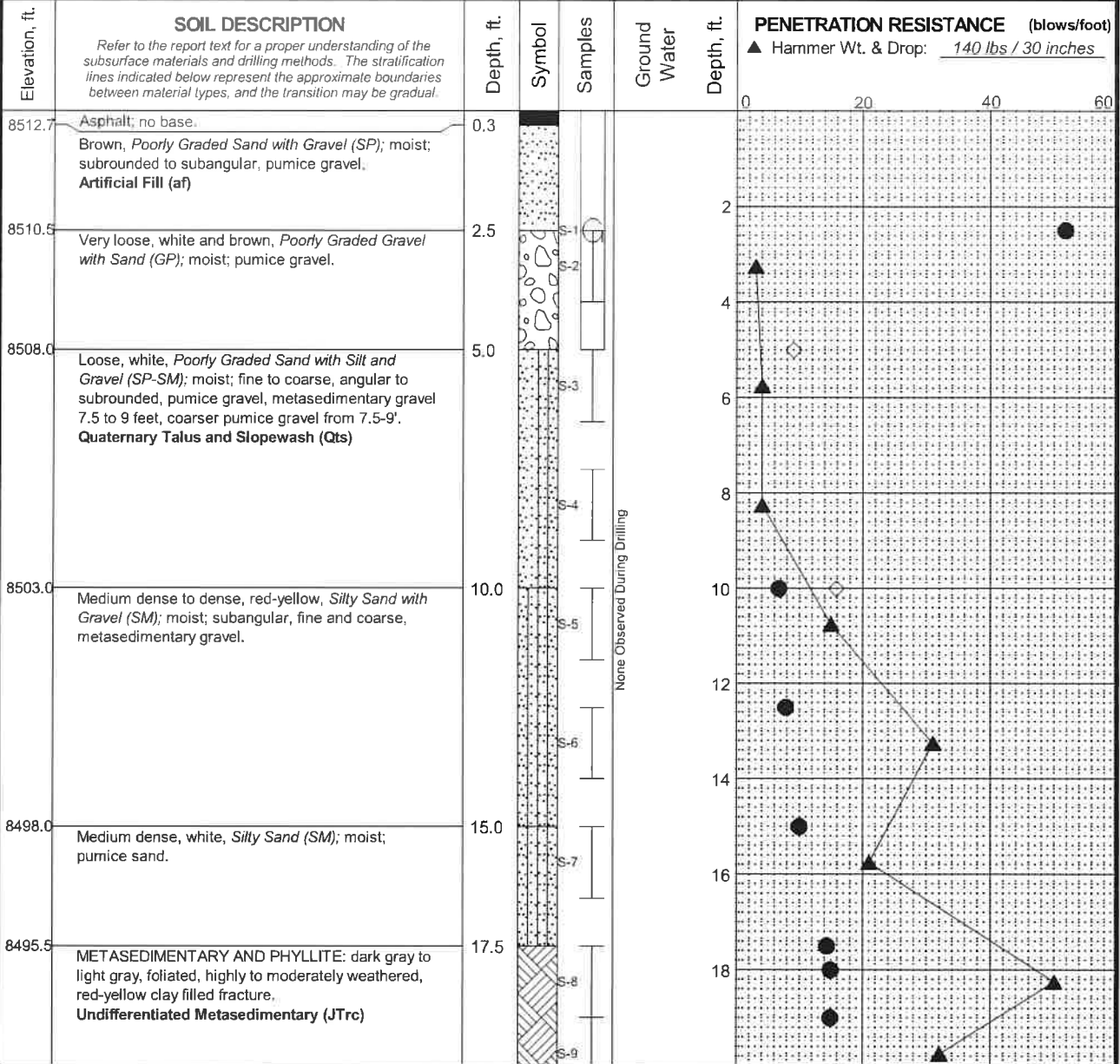
LOG OF BORING SW-B-49

January 2021 100062-003

SHANNON & WILSON, INC.
 Geotechnical and Environmental Consultants

FIG. A-61
 Sheet 2 of 2

Total Depth: 20.5 ft. Latitude: 37.67276 ° Drilling Method: Hollow Stem Auger Hole Diam.: 8 in.
 Top Elevation: ~ 8513 ft. Longitude: -119.0697 ° Drilling Company: 2R Drilling Rod Diam.: _____
 Vert. Datum: EGM96 Geoid Station: 102+50 ft. Drill Rig Equipment: CME 75 Hammer Type: Automatic
 Horiz. Datum: WGS84 Offset: N/A Other Comments: Hole located 5.2 feet from edge of pavement.



Log: SDW Typ: SDH Rev:

CONTINUED NEXT SHEET
LEGEND
 * Sample Not Recovered
 □ Grab Sample
 ⊥ 2.0" O.D. Split Spoon Sample

- NOTES**
1. Refer to KEY for explanation of symbols, codes, abbreviations and definitions.
 2. Groundwater level, if indicated above, is for the date specified and may vary.
 3. USCS designation is based on visual-manual classification and selected lab testing.
 4. The hole location was measured from existing site features and should be considered approximate.

Reds Meadow Road Improvements
 FTFS 03S11(1)
 Madera County, California

LOG OF BORING SW-B-50

January 2021 100062-003

SHANNON & WILSON, INC. **FIG. A-62**
 Geotechnical and Environmental Consultants Sheet 1 of 2

MASTER LOG: E MC 100062.GPJ SHAN_WIL_GDT_5/17/19

Total Depth: 20.5 ft. Latitude: 37.67276 ° Drilling Method: Hollow Stem Auger Hole Diam.: 8 in.
 Top Elevation: ~ 8513 ft. Longitude: -119.0697 ° Drilling Company: 2R Drilling Rod Diam.: _____
 Vert. Datum: EGM96 Geoid Station: 102+50 ft. Drill Rig Equipment: CME 75 Hammer Type: Automatic
 Horiz. Datum: WGS84 Offset: N/A Other Comments: Hole located 5.2 feet from edge of pavement.

Elevation, ft.	SOIL DESCRIPTION <i>Refer to the report text for a proper understanding of the subsurface materials and drilling methods. The stratification lines indicated below represent the approximate boundaries between material types, and the transition may be gradual.</i>	Depth, ft.	Symbol	Samples	Ground Water	Depth, ft.	PENETRATION RESISTANCE (blows/foot)			
							▲ Hammer Wt. & Drop: <u>140 lbs / 30 inches</u>			
						0	20	40	60	
8492.5	BOTTOM OF BORING COMPLETED 11/5/18	20.5								
						22				
						24				
						26				
						28				
						30				
						32				
						34				
						36				
						38				

Log: SDW Rev: Typ: SDH MASTER LOG E MC 100062.GPJ SHAN WILGDT.5/17/19

- LEGEND**
- * Sample Not Recovered
 - Grab Sample
 - 2.0" O.D. Split Spoon Sample

- ◇ % Fines (<0.075mm)
- % Water Content

- NOTES**
- Refer to KEY for explanation of symbols, codes, abbreviations and definitions.
 - Groundwater level, if indicated above, is for the date specified and may vary.
 - USCS designation is based on visual-manual classification and selected lab testing.
 - The hole location was measured from existing site features and should be considered approximate.

Reds Meadow Road Improvements
 FTFS 03S11(1)
 Madera County, California

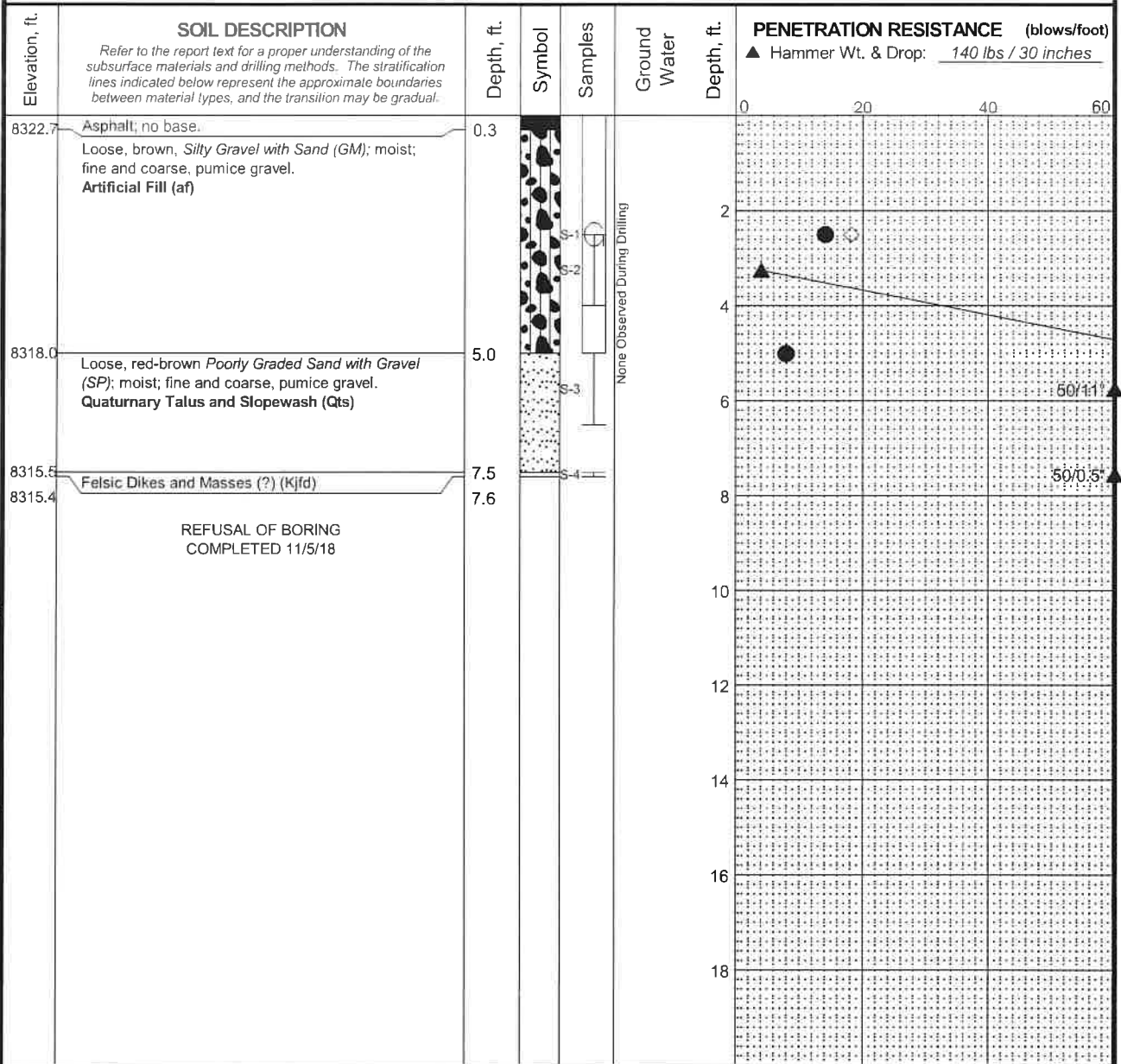
LOG OF BORING SW-B-50

January 2021 100062-003

SHANNON & WILSON, INC.
 Geotechnical and Environmental Consultants

FIG. A-62
 Sheet 2 of 2

Total Depth: 7.5 ft. Latitude: 37.67785 ° Drilling Method: Hollow Stem Auger Hole Diam.: 8 in.
 Top Elevation: ~ 8323 ft. Longitude: -119.0768 ° Drilling Company: 2R Drilling Rod Diam.: _____
 Vert. Datum: EGM96 Geoid Station: 131+50 ft. Drill Rig Equipment: CME 75 Hammer Type: Automatic
 Horiz. Datum: WGS84 Offset: N/A Other Comments: Hole located 5.0 feet from edge of pavement.



Log: SDW Typ: SDH Rev:

MASTER LOG E MC 100062.GPJ SHAN WIL.GDT.5/17/19

- LEGEND**
- * Sample Not Recovered
 - ☐ Grab Sample
 - I 2.0" O.D. Split Spoon Sample

- ◇ % Fines (<0.075mm)
- % Water Content

- NOTES**
1. Refer to KEY for explanation of symbols, codes, abbreviations and definitions.
 2. Groundwater level, if indicated above, is for the date specified and may vary.
 3. USCS designation is based on visual-manual classification and selected lab testing.
 4. The hole location was measured from existing site features and should be considered approximate.

Reds Meadow Road Improvements
 FTFS 03S11(1)
 Madera County, California

LOG OF BORING SW-B-51

January 2021 100062-003

SHANNON & WILSON, INC.
 Geotechnical and Environmental Consultants

FIG. A-63