

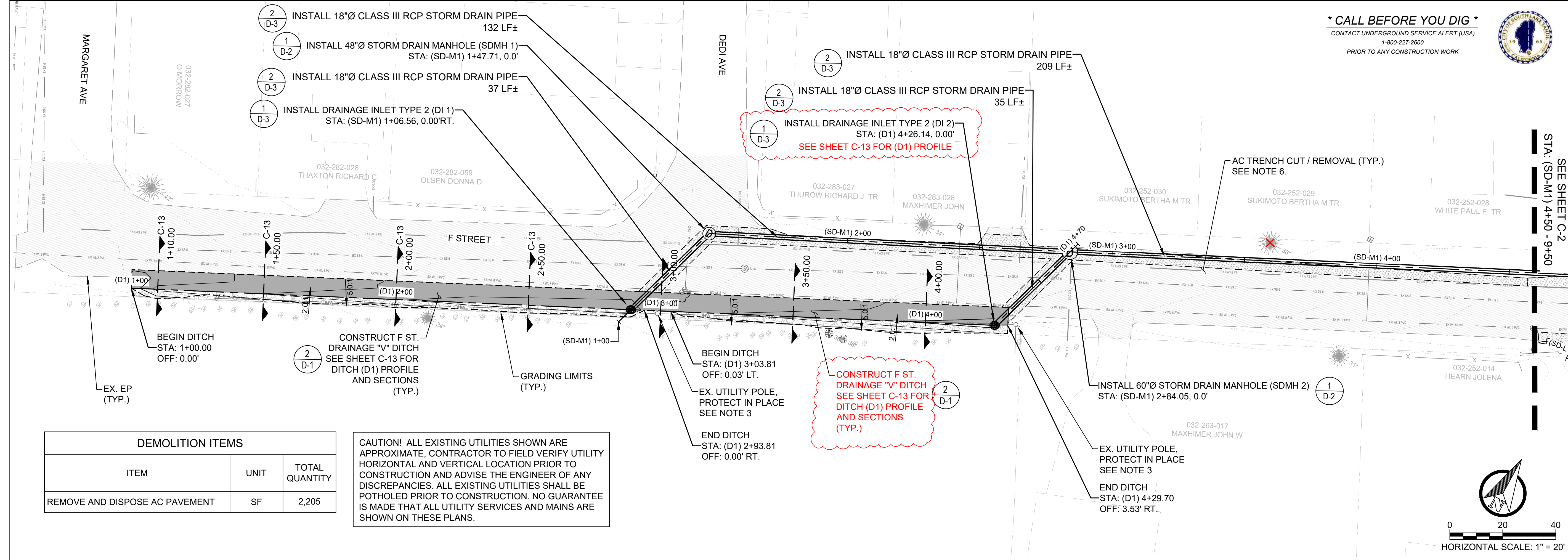
Plot Stamp: 5/3/2023 5:20:45 PM - Trujillo, Ivan
 File: U:\23780040\107_historical\15 CAD\Phase 11 DWG\33 Sheets\TVGS_PLAN\PROFILE_BONANZA.dwg, Tab: C-1

*** CALL BEFORE YOU DIG ***
 CONTACT UNDERGROUND SERVICE ALERT (USA)
 1-800-227-2600
 PRIOR TO ANY CONSTRUCTION WORK



Cardno
 LAKE TAHOE
 256 HIGHWAY 50, ZEPHYRUS COVE, NV 89448
 TEL: (775) 588-9069 FAX: (775) 588-9219
 www.cardno.com

F STREET PLAN AND PROFILE SHEET 1
TVSG IMPROVEMENT PROJECT PHASE I
CITY OF SOUTH LAKE TAHOE
SOUTH LAKE TAHOE, CA



DEMOLITION ITEMS		
ITEM	UNIT	TOTAL QUANTITY
REMOVE AND DISPOSE AC PAVEMENT	SF	2,205

CAUTION! ALL EXISTING UTILITIES SHOWN ARE APPROXIMATE. CONTRACTOR TO FIELD VERIFY UTILITY HORIZONTAL AND VERTICAL LOCATION PRIOR TO CONSTRUCTION AND ADVISE THE ENGINEER OF ANY DISCREPANCIES. ALL EXISTING UTILITIES SHALL BE POTHOLED PRIOR TO CONSTRUCTION. NO GUARANTEE IS MADE THAT ALL UTILITY SERVICES AND MAINS ARE SHOWN ON THESE PLANS.

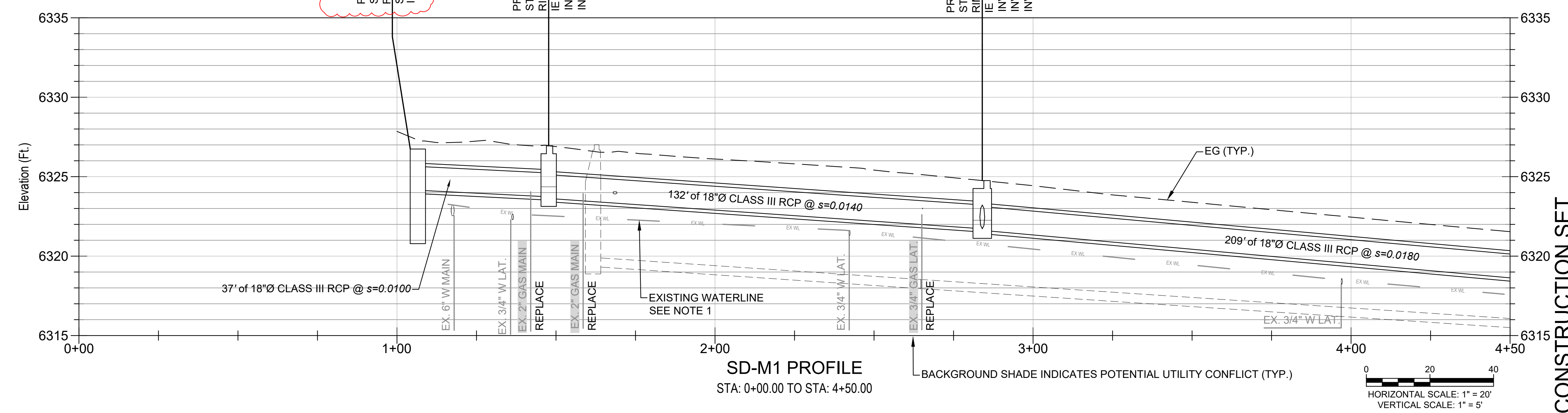
ADDITIONAL TREE REMOVALS		
ITEM	UNIT	TOTAL QUANTITY
REMOVE TREE, PINE (>30")	EA	1

- NOTES:
- CONTRACTOR SHALL PROVIDE WATERLINE PROTECTION WHERE REQUIRED. SEE GENERAL NOTES 27, 28, 29 AND 30, SHEET ii.
 - CONTRACTOR SHALL CONTACT SOUTHWEST GAS CO. TO RELOCATE GAS LINES AS REQUIRED. SEE GENERAL NOTES 31 AND 32, SHEET ii.
 - CONTRACTOR TO CONTACT POWER UTILITY AND FOLLOW ALL REQUIREMENTS OF PROTECTING UTILITY POLE IN PLACE.
 - SEE SHEET C-11 FOR LATERAL PROFILES.
 - SEE SHEET C-17 FOR MANHOLE ALIGNMENTS.
 - TEMPORARY TRENCH PATCH IS REQUIRED TO MEET WATER QUALITY POLLUTION CONTROL REQUIREMENTS. SEE SPECIAL PROVISIONS. CONTRACTOR SHALL COMPLETE FULL ROADWAY ASPHALT PAVEMENT REHABILITATION PER SHEETS RR0-RR9.

PROPOSED DI (DI 1)
 STA: 1+06.56, 0.00' RT.
 RIM: 6326.74'
 SUMP: 6321.28'
 INV OUT (N 18"): 6324.14'

PROPOSED SDMH 48"Ø (SDMH 1)
 STA: 1+47.71, 0.0'
 RIM: 6326.94'
 IE (SDMH): 6323.63'
 INV IN (S 18"): 6323.73'
 INV OUT (NE 18"): 6323.63'

PROPOSED SDMH 60"Ø (SDMH 2)
 STA: 2+84.05, 0.0'
 RIM: 6324.76'
 IE (SDMH): 6321.62'
 INV IN (SW 18"): 6321.72'
 INV IN (S 18"): 6321.72'
 INV OUT (NE 18"): 6321.62'



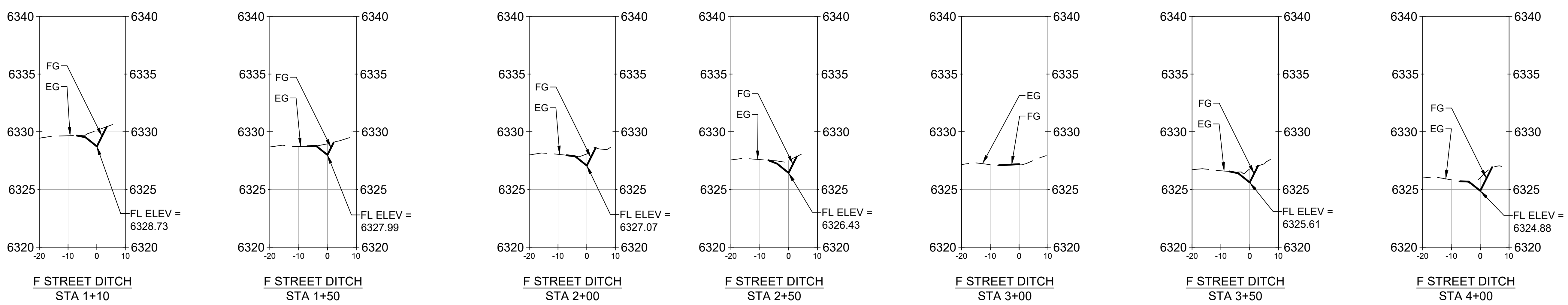
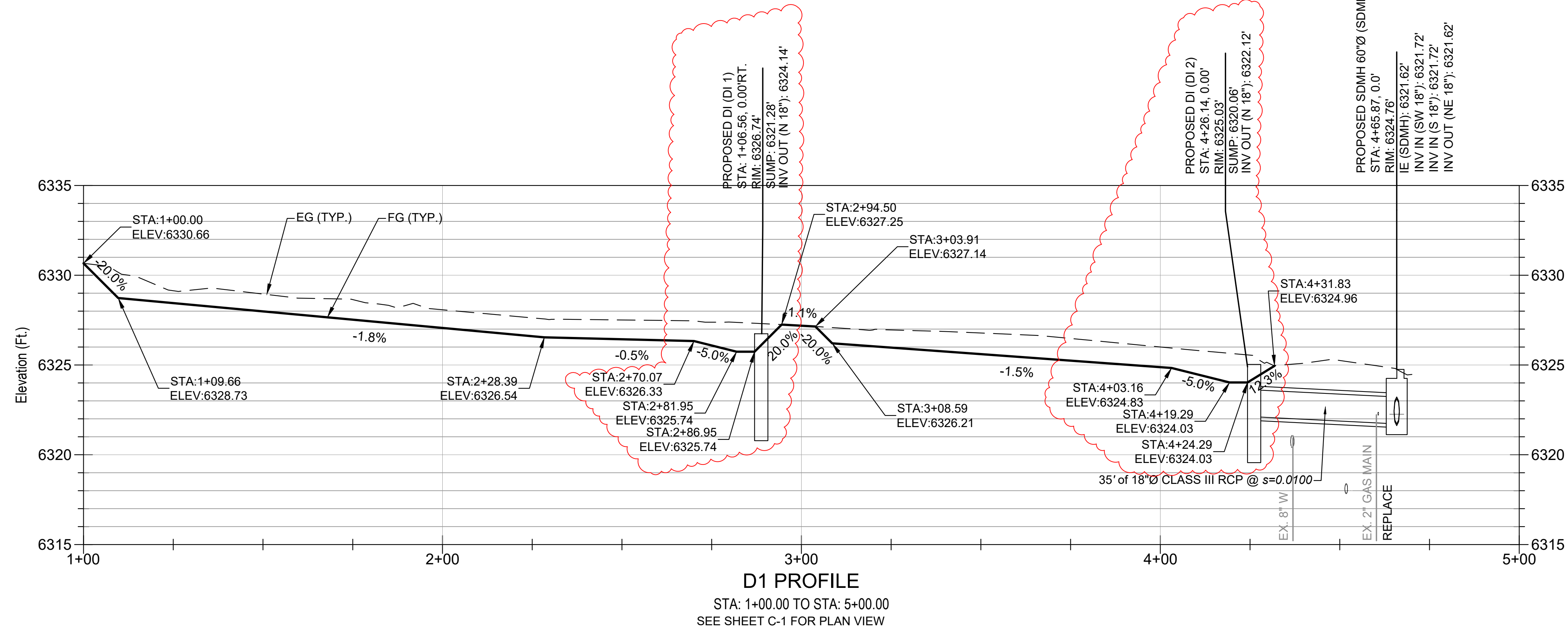
#	DATE	DESCRIPTION	BY
1	6/13/22	EX. UTILITY UPDATES, AND SD REVISIONS	IT
2	01/08/23	EX. UTILITY UPDATES, AND SD REVISIONS	IT
3	02/13/23	ADDITIONAL TREE REMOVALS	IT



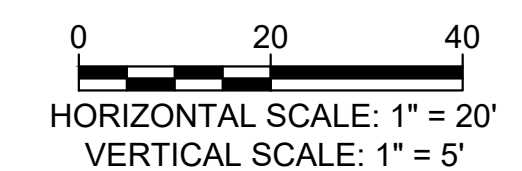
DATE	FEB 2023
DRAWN	BT
DESIGNED	IT / JD
CHECKED	JD / BM
PROJECT #	E320400600
SHEET TITLE	C-1
SHEET NUMBER	7

CONSTRUCTION SET

*** CALL BEFORE YOU DIG ***
 CONTACT UNDERGROUND SERVICE ALERT (USA)
 1-800-227-2600
 PRIOR TO ANY CONSTRUCTION WORK



SEE SHEET C-1 FOR PLAN VIEW
 SEE DETAIL 2/D-1 FOR DITCH DETAIL



BY	DATE	DESCRIPTION
BT	01/19/23	EX. UTILITY UPDATES, AND SD REVISIONS
IT	01/08/23	EX. UTILITY UPDATES, AND SD REVISIONS



DATE	FEB 2023
DRAWN	BT
DESIGNED	IT / JD
CHECKED	JD / BM
PROJECT #	E320400600

SHEET TITLE: C-13
 SHEET NUMBER: 20

F STREET DITCH PROFILE AND SECTIONS
TVSG IMPROVEMENT PROJECT PHASE I
 CITY OF SOUTH LAKE TAHOE
 SOUTH LAKE TAHOE, CA

LAKE TAHOE
 296 HIGHWAY 50, ZEPHYRUS COVE, NV 89448
 TEL: (775) 588-9069 FAX: (775) 588-9219
 www.cardno.com

Plot Stamp: 5/3/2023 5:21:02 PM - Trujillo, Ivan
 File: U:\23780040\107_historical\15 CAD\Phase 111 DWG\3 Sheets\TVSG_PLAN_PROFILE_BONANZA.dwg, Tab: C-13

CONSTRUCTION SET